

VERMONT ECONOMIC AND TRAVEL INDICATORS

OCTOBER 2014

visit our web site at: www.vtLmi.info

Labor Market & Business Activity	Current	Last	Year	% Change	
	Month	Month	Ago	Last Month	Last Year
Employment (NonFarm,S.A.,Thousand) *	308.1	307.2	305.9	0.3%	0.7%
Avg. Weekly Hours (Manufacturing) *	38.6	38.5	38.4	0.3%	0.5%
Unemployment Rate (S. A. %)	4.4	4.4	4.4	0.0%	0.0%
U.I. Initial Claims	3,191	1,797	3,575	77.6%	-10.7%
U.I. Exhaustees	282	258	321	9.3%	-12.1%
Passenger Car Registrations	30,803	32,096	30,654	-4.0%	0.5%
Total Current Car Registrations	422,557	421,268	420,580	0.3%	0.5%
Total Current Pick-Up Truck Reg.	105,698	105,254	106,735	0.4%	-1.0%
Bank Deposits - Survey (\$Million)	6,705	6,729	6,617	-0.4%	1.3%
Business Formations **	585	618	NA	-5.3%	NA
Airport Enplanements (B.I.A.)	57,727	52,737	58,359	9.5%	-1.1%

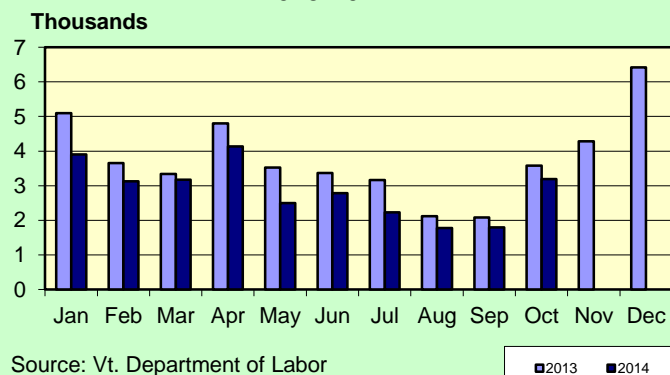
* Current Month numbers are preliminary, Last Month & Year Ago are revised.

** Not comparable to previous issues, <https://www.vtsosonline.com/>

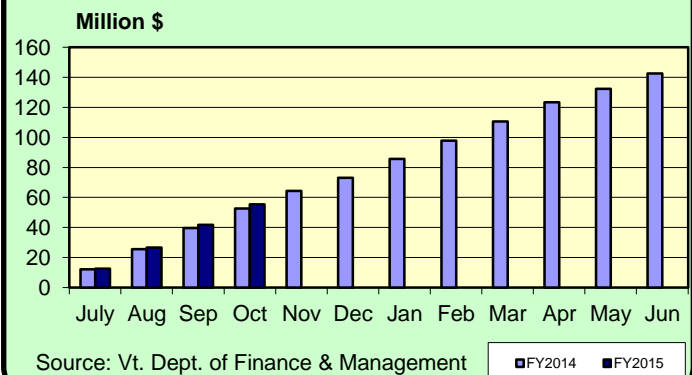
State Tax Revenues (\$Million)	Current	Fiscal Year	FYTD	% Change	
	Month	To Date	Last Year	Last Year	Last FYTD
General Fund	107.3	434.3	425.4	-1.7%	2.1%
Personal Income	55.8	219.7	216.6	-6.1%	1.5%
Sales & Use	22.9	83.0	79.3	5.4%	4.7%
Corporate Income	2.2	28.5	22.8	3.3%	24.7%
Rooms & Meals	13.7	55.4	52.6	5.8%	5.3%
Property Transfer	1.2	4.4	4.1	26.8%	7.4%
Other *	10.4	32.2	31.6	-3.4%	1.8%
Transportation Fund	23.0	89.1	85.4	7.4%	4.3%
Gasoline	7.2	27.3	27.1	19.2%	0.7%
Purchase and Use	6.4	22.0	20.9	10.0%	5.0%
Motor Vehicle Fees	6.9	20.9	26.3	1.8%	-20.4%
Other	1.5	3.5	6.2	-0.6%	-44.1%
Education Fund, non-property tax component	16.3	61.1	59.7	-0.7%	2.3%

* Includes: Insurance, Inheritance & Estate, Bank Franchise, Telephone, Liquor, Beverage, Fees and Other Taxes.

**UI Initial Claims
2013-2014**



**Rooms & Meals Tax Revenues to Date
FY2013-FY2014**



OCTOBER 2014

Construction

Residential Building Permits	Current	Year	Year	Year To Date	
	Month	To Date	Ago	Last Year	% Change
Housing Units	98	1,089	144	1,227	-11.2%
Estimated Value (\$thousand)	18,819	202,180	26,954	211,910	-4.6%

Employment	Current	Last	Year	% Change	
	Month	Month	Ago	Last Month	Last Year
Construction Emp. (S.A.,thousand)	13.6	14.6	14.5	-6.8%	-6.2%

Travel & Tourism	Current	Last	Year	% Change	
	Month	Month	Ago	Last Month	Last Year
Leisure & Hospitality Emp. (S.A.,thousand)	34.6	34.5	34.8	0.3%	-0.6%
Selected Traffic Volume *	69,655	69,078	70,469	0.8%	-1.2%

>Welcome Center Counts, Total	90,093	80,446	90,386	12.0%	-0.3%
Guilford	65,553	56,234	64,875	16.6%	1.0%
Fair Haven	15,478	15,471	15,932	0.0%	-2.8%
Georgia (Southbound)	9,062	8,741	9,579	3.7%	-5.4%

* Missing one site, numbers have been adjusted.

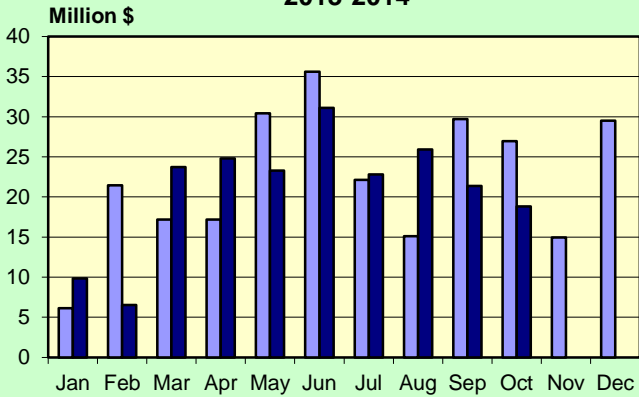
Seasonal Indicators	Current	Season	Year	Season To Date	
	Month	To Date	Ago	Year Ago	% Change
Attendance Surveys					
State Parks (Day Use)	24,540	562,615	23,655	512,411	9.8%
State Campgrounds (Campers)	14,919	407,704	16,571	384,730	6.0%
Travel Attr. & Museums (Summer) *	51,306	314,456	59,498	356,239	-11.7%
Travel Attr. & Museums (Year Round) **	72,768	544,540	62,269	522,824	4.2%

* Based on VDOL survey of 8 Attractions operating during months of May - Oct. ** Based on VDOL survey of 7 attractions.

Travel Attraction data is collected as part of a managed sample; above information may not be directly comparable to previous releases..

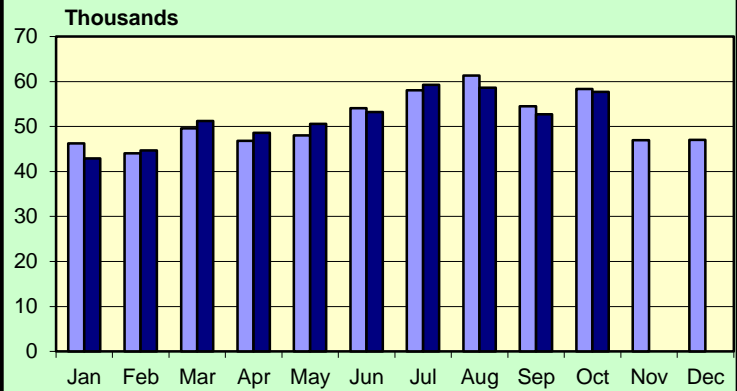
OCTOBER 2014

**Vermont Residential Building Permits
Estimated Value (\$Million)
2013-2014**



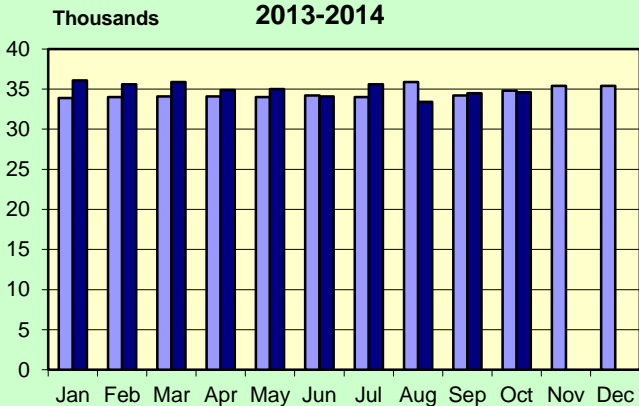
Source: U.S. Census Bureau

**Enplanements 2013-2014
Burlington International Airport**



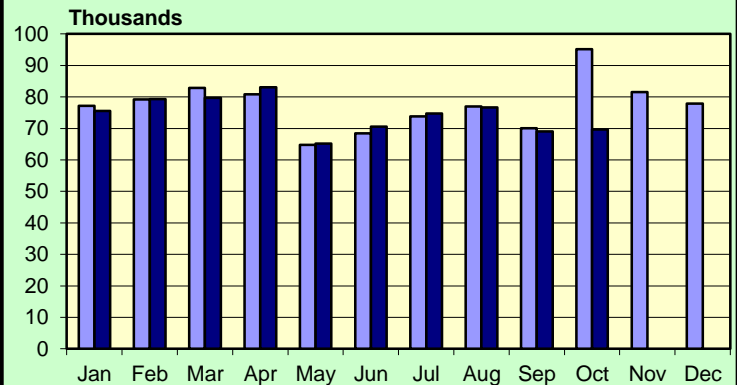
Source: BIA Administration

**Leisure & Hospitality Employment
Seasonally Adjusted Estimates
2013-2014**



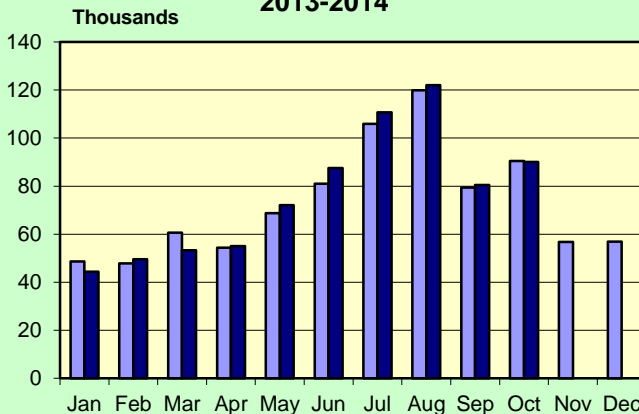
Source: Vt. Department of Labor, LMI Section.

**Traffic Volumes at Selected Locations
2013-2014**



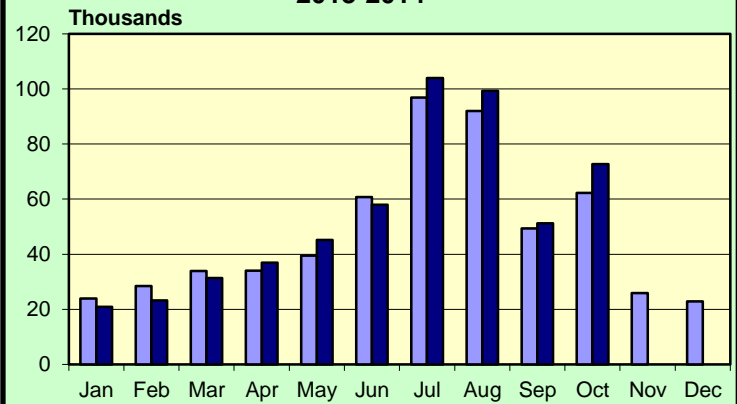
Source: Vt. Agency of Transportation
See note in table.

**Welcome Center Counts
2013-2014**



Source: Vermont Information Center Division, BGS.

**Travel Attraction Attendance (Yr Rd)
2013-2014**



Based on VDOL survey of 7 Attractions.

OCTOBER 2014

Rooms & Meals Business Receipts **	CY 2nd Qtr	CY 1st Qtr	CY 2nd Qtr	% Change	
	(Apr-Jun) 2014 *	(Jan-Mar) 2013	(Apr-Jun) 2013	Last Quarter	Last Year
Meals (\$Thousand)	223,667	228,796	213,916	-2.2%	4.6%
Room (\$Thousand)	78,965	132,109	70,939	-40.2%	11.3%
Alcohol (\$Thousand)	39,208	49,004	36,703	-20.0%	6.8%

* Numbers are preliminary.

** All Business Receipts are for the Calendar Year (CY).

Vermont DEPARTMENT OF LABOR
ECONOMIC AND TRAVEL INDICATORS

Vermont Economic and Travel Indicators is published by the Economic & Labor Market Information Section of the VT Department of Labor. This publication can be found on our website: www.vtLmi.info

For more information or email address changes: Phone: (802)828-4202
or email: Labor-Lmi@state.vt.us

Data sources for this publication are: U.S.Census Bureau; Burlington Airport Administration; Vt. Departments of Labor, Finance & Management, Forests, Parks & Recreation, Taxes, Motor Vehicles, Vermont Information Center Division, Buildings & General Services, Vt. Agency of Transportation; Secretary of State's Office; Vt. Division for Historic Preservation; selected banks and travel attractions.

Equal opportunity is the law. The State of Vermont is an Equal Opportunity / Affirmative Action Employer. Applications from women, individuals with disabilities, and people from diverse cultural backgrounds are encouraged. Auxiliary aids and services are available upon request to individuals with disabilities. 711 (TTY/Relay Service) or (802) 828-4203 TDD (Vermont Department of Labor).