

# VERMONT ECONOMIC AND TRAVEL INDICATORS

## NOVEMBER 2014

visit our web site at: [www.vtLmi.info](http://www.vtLmi.info)

Labor Market & Business Activity	Current	Last	Year	% Change	
	Month	Month	Ago	Last Month	Last Year
Employment (NonFarm,S.A.,Thousand) *	311.7	308.1	307.6	1.2%	1.3%
Avg. Weekly Hours (Manufacturing) *	37.7	38.6	38.4	-2.3%	-1.8%
Unemployment Rate (S. A. %)	4.3	4.4	4.3	-2.3%	0.0%
U.I. Initial Claims	4,259	3,191	4,280	33.5%	-0.5%
U.I. Exhaustees	245	282	329	-13.1%	-25.5%
Passenger Car Registrations	24,315	30,803	24,643	-21.1%	-1.3%
Total Current Car Registrations	421,294	422,557	420,936	-0.3%	0.1%
Total Current Pick-Up Truck Reg.	105,255	105,698	106,703	-0.4%	-1.4%
Bank Deposits - Survey (\$Million)	6,698	6,705	6,687	-0.1%	0.2%
Business Formations **	406	585	NA	-30.6%	NA
Airport Enplanements (B.I.A.)	45,416	57,727	46,967	-21.3%	-3.3%

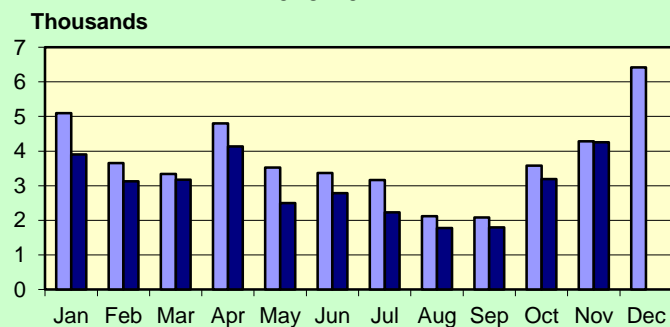
\* Current Month numbers are preliminary, Last Month & Year Ago are revised.

\*\* Not comparable to previous issues, <https://www.vtsosonline.com/>

State Tax Revenues (\$Million)	Current	Fiscal Year	FYTD	% Change	
	Month	To Date	Last Year	Last Year	Last FYTD
<b>General Fund</b>	<b>78.2</b>	<b>512.6</b>	<b>505.4</b>	<b>-2.2%</b>	<b>1.4%</b>
Personal Income	38.3	258.0	255.4	-1.3%	1.0%
Sales & Use	18.2	101.2	97.1	2.0%	4.2%
Corporate Income	-1.1	27.4	20.7	NA	32.2%
Rooms & Meals	11.9	67.3	64.5	0.7%	4.5%
Property Transfer	0.9	5.2	5.0	-7.6%	4.6%
Other *	4.0	36.2	35.8	-5.0%	1.0%
<b>Transportation Fund</b>	<b>17.4</b>	<b>106.5</b>	<b>104.7</b>	<b>-9.8%</b>	<b>1.7%</b>
Gasoline	5.2	32.5	34.3	-28.0%	-5.3%
Purchase and Use	4.5	27.2	25.5	-2.6%	6.5%
Motor Vehicle Fees	4.7	31.4	31.1	-3.1%	1.0%
Other	1.3	7.8	7.3	13.0%	5.9%
<b>Education Fund, non-property tax component</b>	<b>14.3</b>	<b>75.4</b>	<b>72.7</b>	<b>10.2%</b>	<b>3.7%</b>

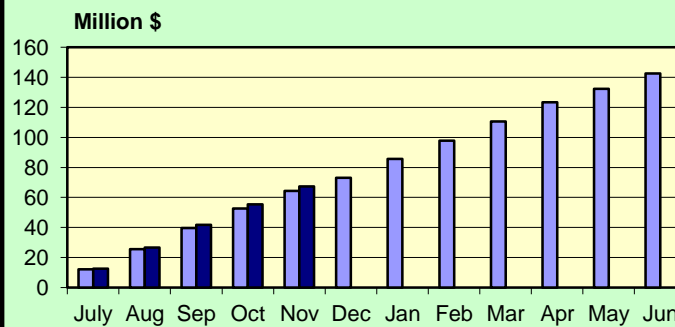
\* Includes: Insurance, Inheritance & Estate, Bank Franchise, Telephone, Liquor, Beverage, Fees and Other Taxes.

**UI Initial Claims  
2013-2014**



Source: Vt. Department of Labor

**Rooms & Meals Tax Revenues to Date  
FY2013-FY2014**



Source: Vt. Dept. of Finance & Management

## NOVEMBER 2014

### Construction

Residential Building Permits	Current	Year	Year	Year To Date	
	Month	To Date	Ago	Last Year	% Change
Housing Units	161	1,250	92	1,318	-5.2%
Estimated Value (\$thousand)	17,987	220,348	14,956	225,889	-2.5%

Employment	Current	Last	Year	% Change	
	Month	Month	Ago	Last Month	Last Year
Construction Emp. (S.A.,thousand)	14.7	13.6	14.4	8.1%	2.1%

Travel & Tourism	Current	Last	Year	% Change	
	Month	Month	Ago	Last Month	Last Year
Leisure & Hospitality Emp. (S.A.,thousand)	37.2	34.6	35.9	7.5%	3.6%
Selected Traffic Volume *	63,708	69,655	60,801	-8.5%	4.8%

>Welcome Center Counts, Total	55,184	90,093	56,802	-38.7%	-2.8%
Guilford	40,312	65,553	40,640	-38.5%	-0.8%
Fair Haven	9,067	15,478	9,384	-41.4%	-3.4%
Georgia (Southbound)	5,805	9,062	6,778	-35.9%	-14.4%

\* Missing one site, numbers have been adjusted.

Seasonal Indicators	Current	Season	Year	Season To Date	
	Month	To Date	Ago	Year Ago	% Change

### Attendance Surveys

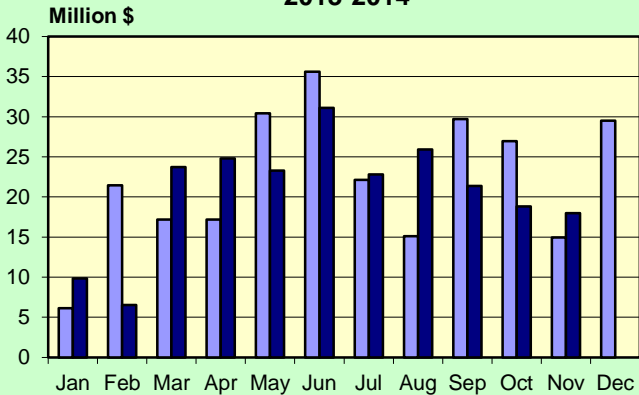
State Parks (Day Use)	NA	562,615	NA	512,411	9.8%
State Campgrounds (Campers)	NA	407,704	NA	384,730	6.0%
Travel Attr. & Museums (Summer) *	NA	314,456	NA	356,239	-11.7%
Travel Attr. & Museums (Year Round) **	23,735	568,275	25,935	548,759	3.6%

\* Based on VDOL survey of 8 Attractions operating during months of May - Oct. \*\* Based on VDOL survey of 7 attractions.

Travel Attraction data is collected as part of a managed sample; above information may not be directly comparable to previous releases..

## NOVEMBER 2014

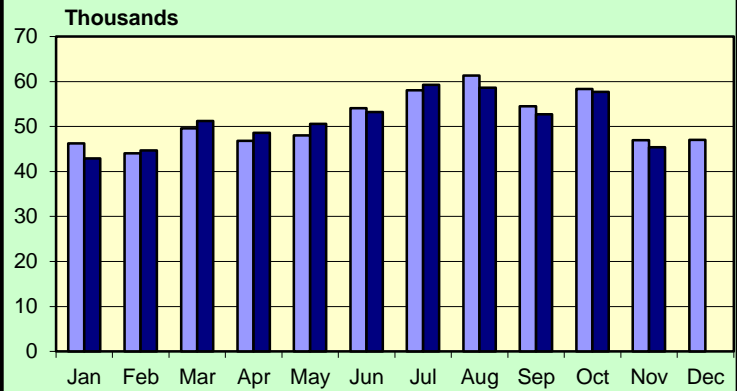
**Vermont Residential Building Permits  
Estimated Value (\$Million)  
2013-2014**



Source: U.S. Census Bureau

■ 2013 ■ 2014

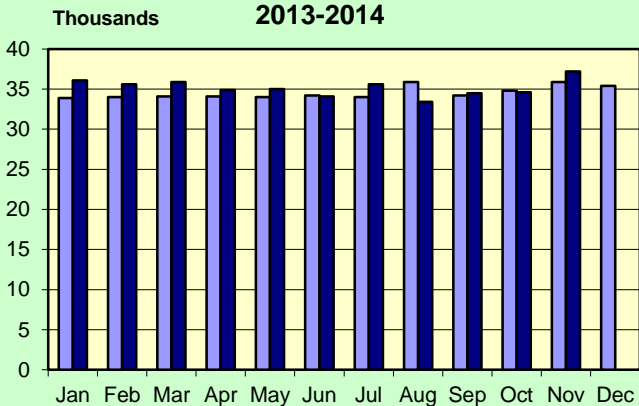
**Enplanements 2013-2014  
Burlington International Airport**



Source: BIA Administration

■ 2013 ■ 2014

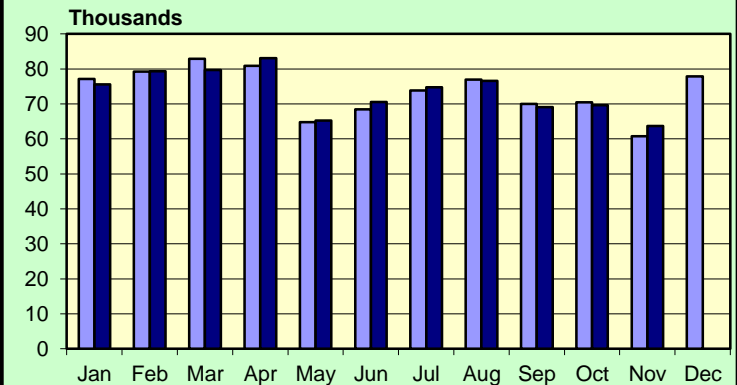
**Leisure & Hospitality Employment  
Seasonally Adjusted Estimates  
2013-2014**



Source: Vt. Department of Labor, LMI Section.

■ 2013 ■ 2014

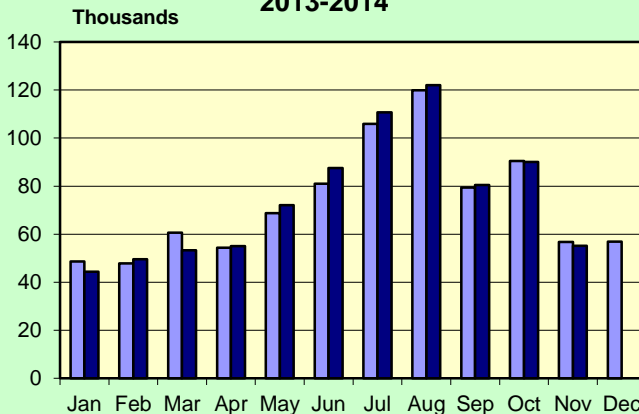
**Traffic Volumes at Selected Locations  
2013-2014**



Source: Vt. Agency of Transportation  
See note in table.

■ 2013 ■ 2014

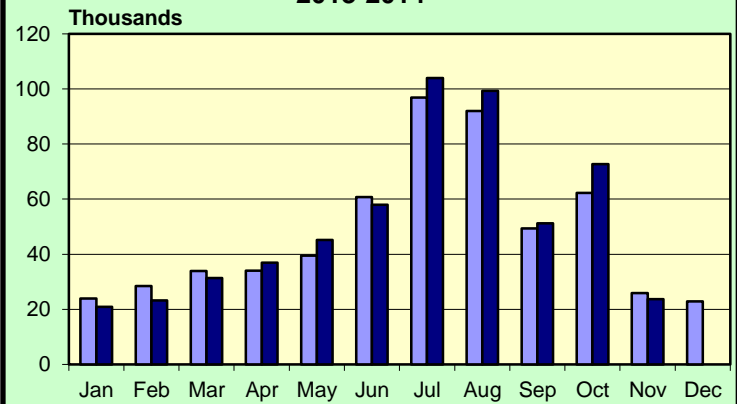
**Welcome Center Counts  
2013-2014**



Source: Vermont Information Center Division, BGS.

■ 2013 ■ 2014

**Travel Attraction Attendance (Yr Rd)  
2013-2014**



Based on VDOL survey of 7 Attractions.

■ 2013 ■ 2014

**NOVEMBER 2014**

Rooms & Meals Business Receipts **	CY 3rd Qtr	CY 2nd Qtr	CY 3rd Qtr	% Change	
	(Jul-Sep) 2014 *	(Apr-Jun) 2014	(Jul-Sep) 2013	Last Quarter	Last Year
Meals (\$Thousand)	266,745	225,793	252,575	18.1%	5.6%
Room (\$Thousand)	140,733	79,240	134,480	77.6%	4.6%
Alcohol (\$Thousand)	49,078	39,835	45,751	23.2%	7.3%

\* Numbers are preliminary.

\*\* All Business Receipts are for the Calendar Year (CY).

**Vermont DEPARTMENT OF LABOR**  
**ECONOMIC AND TRAVEL INDICATORS**

Vermont Economic and Travel Indicators is published by the Economic & Labor Market Information Section of the VT Department of Labor. This publication can be found on our website: [www.vtLmi.info](http://www.vtLmi.info)

For more information or email address changes: Phone: (802)828-4202  
or email: [Labor-Lmi@state.vt.us](mailto:Labor-Lmi@state.vt.us)

Data sources for this publication are: U.S.Census Bureau; Burlington Airport Administration; Vt. Departments of Labor, Finance & Management, Forests, Parks & Recreation, Taxes, Motor Vehicles, Vermont Information Center Division, Buildings & General Services, Vt. Agency of Transportation; Secretary of State's Office; Vt. Division for Historic Preservation; selected banks and travel attractions.

Equal opportunity is the law. The State of Vermont is an Equal Opportunity / Affirmative Action Employer. Applications from women, individuals with disabilities, and people from diverse cultural backgrounds are encouraged. Auxiliary aids and services are available upon request to individuals with disabilities. 711 (TTY/Relay Service) or (802) 828-4203 TDD (Vermont Department of Labor).