

VERMONT ECONOMIC AND TRAVEL INDICATORS

JUNE 2014

visit our web site at: www.vtLmi.info

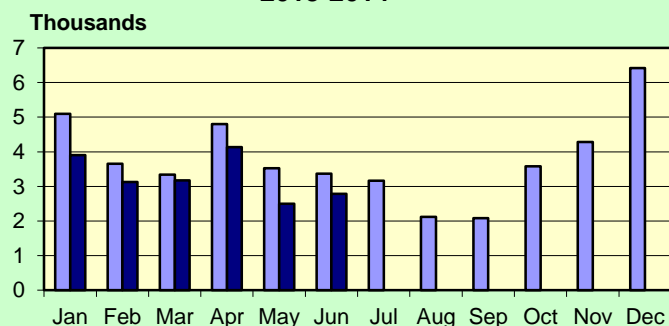
Labor Market & Business Activity	Current	Last	Year	% Change	
	Month	Month	Ago	Last Month	Last Year
Employment (NonFarm,S.A.,Thousand) *	306.1	307.7	306.5	-0.5%	-0.1%
Avg. Weekly Hours (Manufacturing) *	38.4	39.3	38.3	-2.3%	0.3%
Unemployment Rate (S. A. %)	3.5	3.3	4.4	6.1%	-20.5%
U.I. Initial Claims	2,781	2,500	3,370	11.2%	-17.5%
U.I. Exhaustees	337	329	397	2.4%	-15.1%
Passenger Car Registrations	36,514	37,369	35,406	-2.3%	3.1%
Total Current Car Registrations	421,592	421,556	419,914	0.0%	0.4%
Total Current Pick-Up Truck Reg.	105,711	105,789	107,223	-0.1%	-1.4%
Bank Deposits - Survey (\$Million)	6,847	6,656	6,414	2.9%	6.8%
New Business Incorporations **	NA	NA	34	NA	NA
Airport Enplanements (B.I.A.)	53,224	50,555	54,039	5.3%	-1.5%

* Current Month numbers are preliminary, Last Month & Year Ago are revised. ** Includes "closed" corporations. ** Not Available

State Tax Revenues (\$Million)	Current	Fiscal Year	FYTD	% Change	
	Month	To Date	Last Year	Last Year	Last FYTD
General Fund	124.7	1,327.5	1288.6	10.9%	3.0%
Personal Income	63.4	671.0	660.7	6.1%	1.6%
Sales & Use	18.9	229.8	231.2	-1.7%	-0.6%
Corporate Income	21.4	94.9	95.0	64.6%	-0.1%
Rooms & Meals	10.3	142.7	134.8	11.8%	5.9%
Property Transfer	1.0	10.0	9.2	9.6%	9.2%
Other *	8.0	86.6	87.5	-8.5%	-1.0%
Transportation Fund	28.4	253.6	228.2	10.9%	11.1%
Gasoline	7.3	76.5	59.9	12.6%	27.7%
Purchase and Use	7.7	61.2	55.7	15.0%	9.9%
Motor Vehicle Fees	9.3	79.2	77.9	13.7%	1.7%
Other	2.1	19.5	19.1	9.7%	2.2%
Education Fund, non-property tax component	16.2	175.4	166.5	-4.4%	5.4%

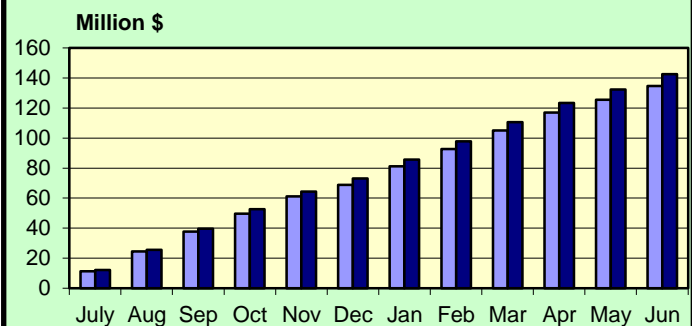
* Includes: Insurance, Inheritance & Estate, Bank Franchise, Telephone, Liquor, Beverage, Fees and Other Taxes.

**UI Initial Claims
2013-2014**



Source: Vt. Department of Labor

**Rooms & Meals Tax Revenues to Date
FY2013-FY2014**



Source: Vt. Dept. of Finance & Management

JUNE 2014

Construction

Residential Building Permits	Current	Year	Year	Year To Date	
	Month	To Date	Ago	Last Year	% Change
Housing Units	158	631	212	728	-13.3%
Estimated Value (\$thousand)	31,095	119,387	35,603	122,908	-2.9%

Employment	Current	Last	Year	% Change	
	Month	Month	Ago	Last Month	Last Year
Construction Emp. (S.A.,thousand)	14.4	14.3	13.8	0.7%	4.3%

Travel & Tourism	Current	Last	Year	% Change	
	Month	Month	Ago	Last Month	Last Year
Leisure & Hospitality Emp. (S.A.,thousand)	33.9	35.0	34.2	-3.1%	-0.9%
Selected Traffic Volume *	70,587	65,224	68,455	8.2%	3.1%

Welcome Center Counts, Total	87,546	72,125	81,013	21.4%	8.1%
Guilford	61,153	50,090	57,272	22.1%	6.8%
Fair Haven	15,688	12,626	15,343	24.3%	2.2%
Georgia (Southbound)	10,705	9,409	8,398	13.8%	27.5%

* Missing one site, numbers have been adjusted.

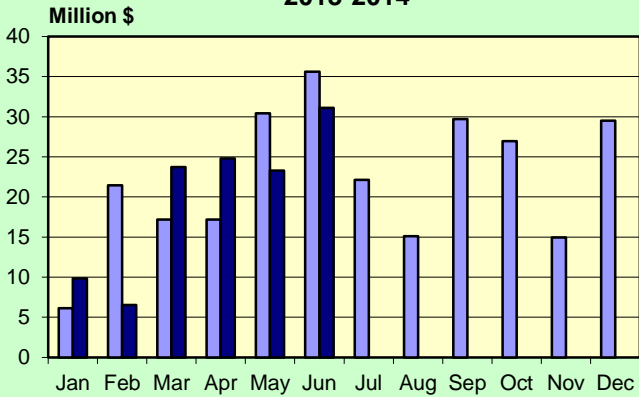
Seasonal Indicators	Current	Season	Year	Season To Date	
	Month	To Date	Ago	Year Ago	% Change
Attendance Surveys					
State Parks (Day Use)	132,469	150,964	88,905	111,238	35.7%
State Campgrounds (Campers)	69,852	97,186	64,091	74,977	29.6%
Travel Attr. & Museums (Summer) *	45,479	67,241	41,312	61,345	9.6%
Travel Attr. & Museums (Year Round) **	57,988	215,839	60,780	220,747	-2.2%

* Based on VDOL survey of 8 Attractions operating during months of May - Oct. ** Based on VDOL survey of 7 attractions.

Travel Attraction data is collected as part of a managed sample; above information may not be directly comparable to previous releases..

JUNE 2014

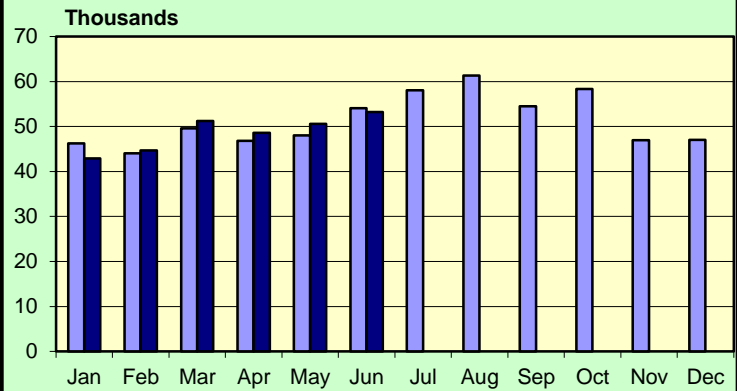
Vermont Residential Building Permits Estimated Value (\$Million) 2013-2014



Source: U.S. Census Bureau

■ 2013 ■ 2014

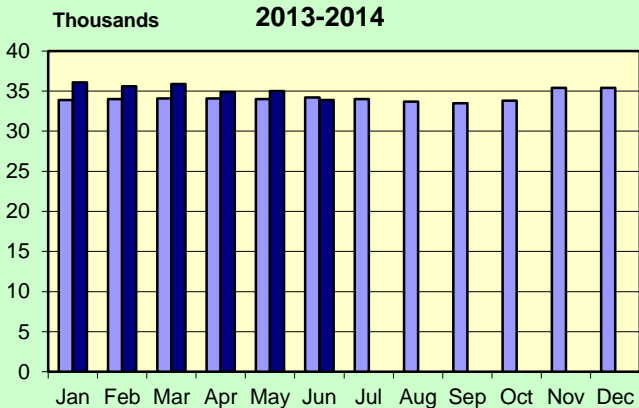
Enplanements 2013-2014 Burlington International Airport



Source: BIA Administration

■ 2013 ■ 2014

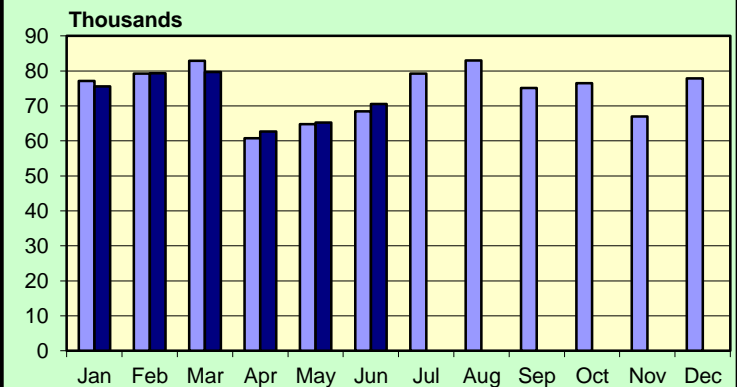
Leisure & Hospitality Employment Seasonally Adjusted Estimates 2013-2014



Source: Vt. Department of Labor, LMI Section.

■ 2013 ■ 2014

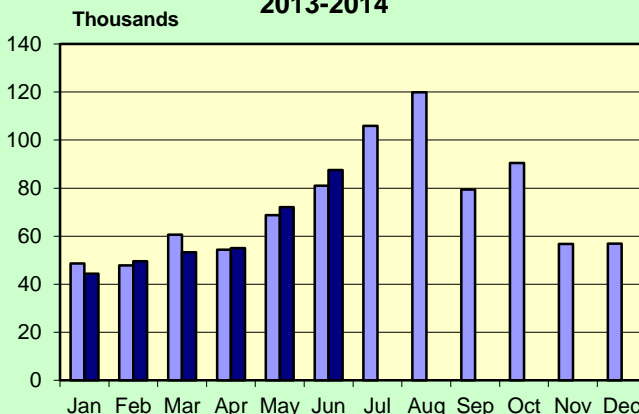
Traffic Volumes at Selected Locations 2013-2014



Source: Vt. Agency of Transportation
See note in table.

■ 2013 ■ 2014

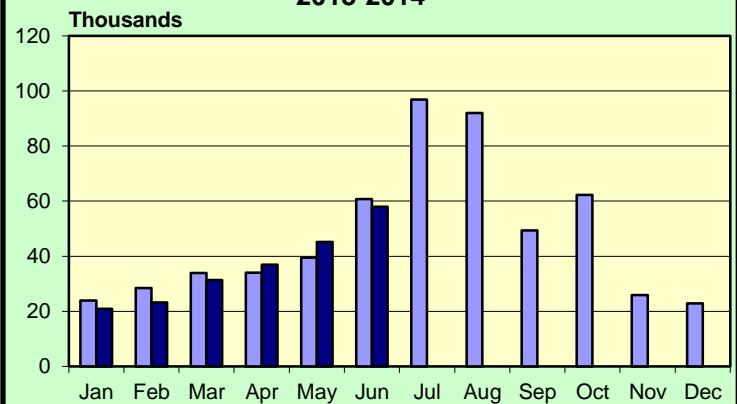
Welcome Center Counts 2013-2014



Source: Vermont Information Center Division, BGS.

■ 2013 ■ 2014

Travel Attraction Attendance (Yr Rd) 2013-2014



Based on VDOL survey of 7 Attractions.

■ 2013 ■ 2014

JUNE 2014

Rooms & Meals Business Receipts **	CY 4TH Qtr (Oct-Dec) 2013	CY 3rd Qtr (Jul-Sep) 2013	CY 4TH Qtr (Oct-Dec) 2012	% Change	
				Last Quarter	Last Year
Meals (\$Thousand)	219,284	256,825	209,873	-14.6%	4.5%
Room (\$Thousand)	100,603	136,245	92,621	-26.2%	8.6%
Alcohol (\$Thousand)	41,278	46,899	38,499	-12.0%	7.2%

* Numbers are preliminary.

** All Business Receipts are for the Calendar Year (CY).

Vermont DEPARTMENT OF LABOR
ECONOMIC AND TRAVEL INDICATORS

Vermont Economic and Travel Indicators is published by the Economic & Labor Market Information Section of the VT Department of Labor. This publication can be found on our website: www.vtLmi.info

For more information or email address changes: Phone: (802)828-4202
or email: Labor-Lmi@state.vt.us

Data sources for this publication are: U.S.Census Bureau; Burlington Airport Administration; Vt. Departments of Labor, Finance & Management, Forests, Parks & Recreation, Taxes, Motor Vehicles, Vermont Information Center Division, Buildings & General Services, Vt. Agency of Transportation; Secretary of State's Office; Vt. Division for Historic Preservation; selected banks and travel attractions.

Equal opportunity is the law. The State of Vermont is an Equal Opportunity / Affirmative Action Employer. Applications from women, individuals with disabilities, and people from diverse cultural backgrounds are encouraged. Auxiliary aids and services are available upon request to individuals with disabilities. 711 (TTY/Relay Service) or (802) 828-4203 TDD (Vermont Department of Labor).