

VERMONT ECONOMIC AND TRAVEL INDICATORS

DECEMBER 2014

visit our web site at: www.vtLmi.info

Labor Market & Business Activity	Current	Last	Year	% Change	
	Month	Month	Ago	Last Month	Last Year
Employment (NonFarm,S.A.,Thousand) *	310.2	311.6	306.3	-0.4%	1.3%
Avg. Weekly Hours (Manufacturing) *	38.7	37.7	39.0	2.7%	-0.8%
Unemployment Rate (S. A. %)	4.2	4.4	4.2	-4.5%	0.0%
U.I. Initial Claims	6,637	4,259	6,417	55.8%	3.4%
U.I. Exhaustees	309	245	409	26.1%	-24.4%
Passenger Car Registrations	23,795	24,315	23,585	-2.1%	0.9%
Total Current Car Registrations	420,555	421,294	419,997	-0.2%	0.1%
Total Current Pick-Up Truck Reg.	105,017	105,255	106,251	-0.2%	-1.2%
Bank Deposits - Survey (\$Million)	6,721	6,698	6,533	0.3%	2.9%
Business Formations **	NA	406	NA	NA	NA
Airport Enplanements (B.I.A.)	46,928	45,416	47,013	3.3%	-0.2%

* Current Month numbers are preliminary, Last Month & Year Ago are revised.

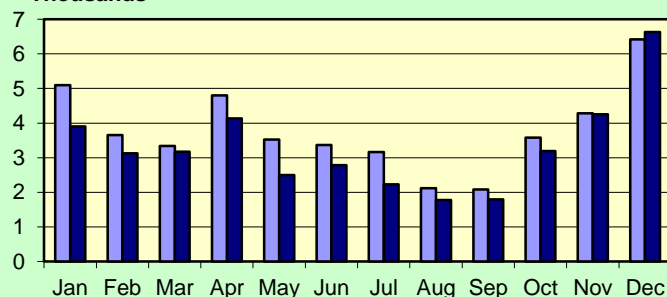
** Not comparable to previous issues, <https://www.vtsosonline.com/>

State Tax Revenues (\$Million)	Current	Fiscal Year	FYTD	% Change	
	Month	To Date	Last Year	Last Year	Last FYTD
General Fund	131.4	644.0	623.9	10.9%	3.2%
Personal Income	66.6	324.6	320.4	2.4%	1.3%
Sales & Use	18.1	119.2	114.9	1.9%	3.8%
Corporate Income	23.1	50.5	37.1	41.1%	36.2%
Rooms & Meals	9.9	77.2	73.2	13.2%	5.5%
Property Transfer	0.9	6.1	5.8	9.3%	5.3%
Other *	10.5	46.6	44.0	28.0%	6.1%
Transportation Fund	21.7	128.2	124.2	11.5%	3.2%
Gasoline	7.5	40.0	40.2	27.8%	-0.4%
Purchase and Use	4.9	32.1	30.0	9.6%	7.0%
Motor Vehicle Fees	5.8	37.2	36.4	8.4%	2.1%
Other	1.9	9.7	8.9	22.0%	8.8%
Education Fund, non-property tax component	14.3	89.7	86.6	2.9%	3.6%

* Includes: Insurance, Inheritance & Estate, Bank Franchise, Telephone, Liquor, Beverage, Fees and Other Taxes.

**UI Initial Claims
2013-2014**

Thousands

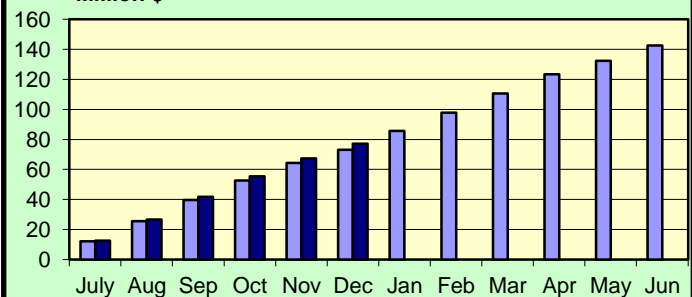


Source: Vt. Department of Labor

■ 2013 ■ 2014

**Rooms & Meals Tax Revenues to Date
FY2013-FY2014**

Million \$



Source: Vt. Dept. of Finance & Management

■ FY2014 ■ FY2015

DECEMBER 2014

Construction

Residential Building Permits	Current	Year	Year	Year To Date	
	Month	To Date	Ago	Last Year	% Change
Housing Units	38	1,281	126	1,455	-12.0%
Estimated Value (\$thousand)	7,268	225,848	29,502	256,873	-12.1%

Employment	Current	Last	Year	% Change	
	Month	Month	Ago	Last Month	Last Year
Construction Emp. (S.A.,thousand)	14.4	14.7	14.6	-2.0%	-1.4%

Travel & Tourism	Current	Last	Year	% Change	
	Month	Month	Ago	Last Month	Last Year
Leisure & Hospitality Emp. (S.A.,thousand)	35.8	37.2	35.4	-3.8%	1.1%
Selected Traffic Volume *	62,190	63,708	59,809	-2.4%	4.0%

>Welcome Center Counts, Total	57,943	55,184	56,895	5.0%	1.8%
Guilford	44,012	40,312	42,713	9.2%	3.0%
Fair Haven	8,849	9,067	9,254	-2.4%	-4.4%
Georgia (Southbound)	5,082	5,805	4,928	-12.5%	3.1%

* Missing one site, numbers have been adjusted.

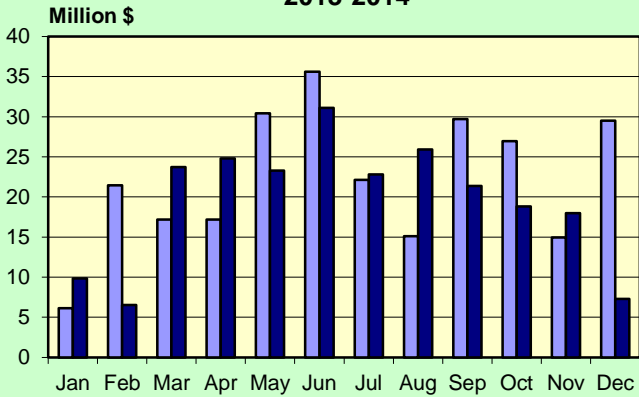
Seasonal Indicators	Current	Season	Year	Season To Date	
	Month	To Date	Ago	Year Ago	% Change
Attendance Surveys					
State Parks (Day Use)	NA	562,615	NA	512,411	9.8%
State Campgrounds (Campers)	NA	407,704	NA	384,730	6.0%
Travel Attr. & Museums (Summer) *	NA	314,456	NA	356,239	-11.7%
Travel Attr. & Museums (Year Round) **	27,604	595,879	22,895	571,654	4.2%

* Based on VDOL survey of 8 Attractions operating during months of May - Oct. ** Based on VDOL survey of 7 attractions.

Travel Attraction data is collected as part of a managed sample; above information may not be directly comparable to previous releases..

DECEMBER 2014

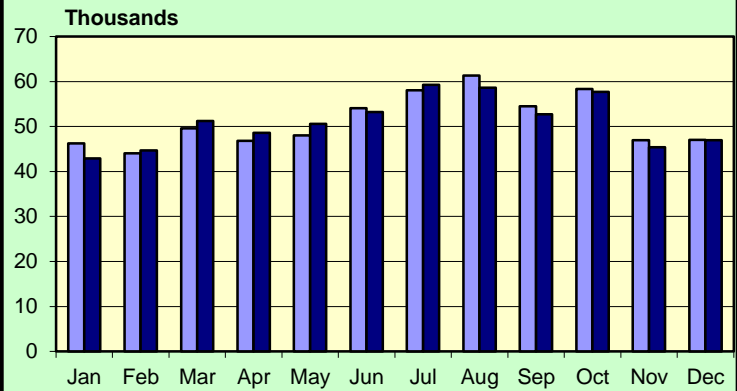
**Vermont Residential Building Permits
Estimated Value (\$Million)
2013-2014**



Source: U.S. Census Bureau

■ 2013 ■ 2014

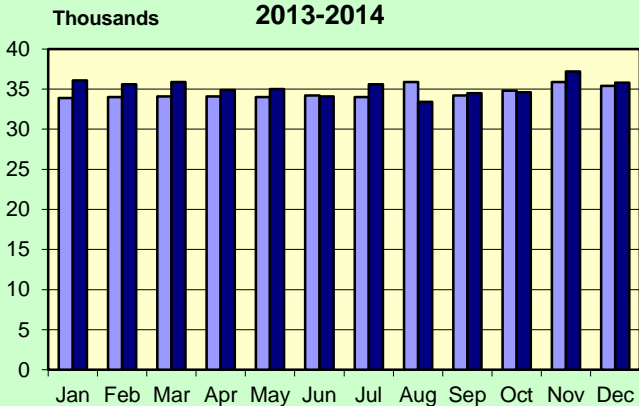
**Enplanements 2013-2014
Burlington International Airport**



Source: BIA Administration

■ 2013 ■ 2014

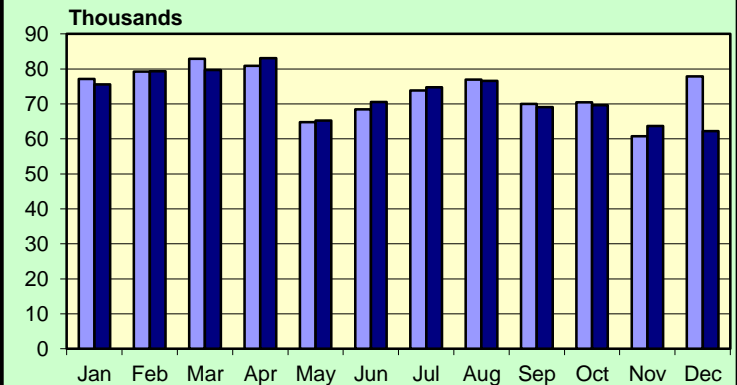
**Leisure & Hospitality Employment
Seasonally Adjusted Estimates
2013-2014**



Source: Vt. Department of Labor, LMI Section.

■ 2013 ■ 2014

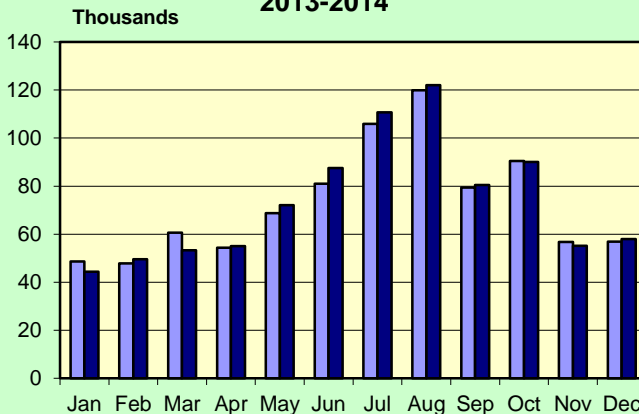
**Traffic Volumes at Selected Locations
2013-2014**



Source: Vt. Agency of Transportation
See note in table.

■ 2013 ■ 2014

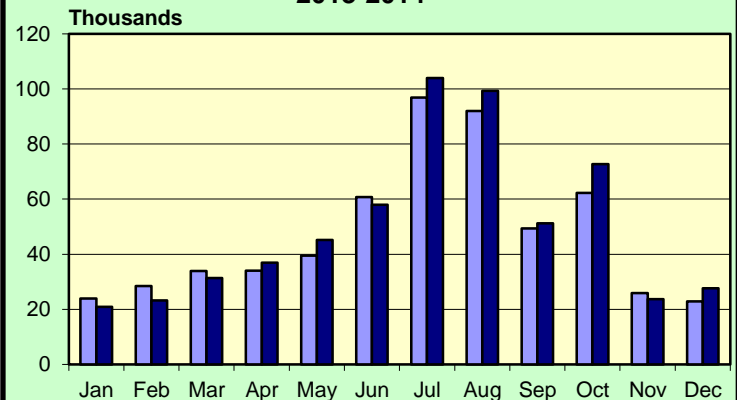
**Welcome Center Counts
2013-2014**



Source: Vermont Information Center Division, BGS.

■ 2013 ■ 2014

**Travel Attraction Attendance (Yr Rd)
2013-2014**



Based on VDOL survey of 7 Attractions.

■ 2013 ■ 2014

DECEMBER 2014

Rooms & Meals Business Receipts **	CY 3rd Qtr	CY 2nd Qtr	CY 3rd Qtr	% Change	
	(Jul-Sep) 2014 *	(Apr-Jun) 2014	(Jul-Sep) 2013	Last Quarter	Last Year
Meals (\$Thousand)	266,745	225,793	252,575	18.1%	5.6%
Room (\$Thousand)	140,733	79,240	134,480	77.6%	4.6%
Alcohol (\$Thousand)	49,078	39,835	45,751	23.2%	7.3%

* Numbers are preliminary.

** All Business Receipts are for the Calendar Year (CY).

Vermont DEPARTMENT OF LABOR
ECONOMIC AND TRAVEL INDICATORS

Vermont Economic and Travel Indicators is published by the Economic & Labor Market Information Section of the VT Department of Labor. This publication can be found on our website: www.vtLmi.info

For more information or email address changes: Phone: (802)828-4202
or email: Labor-Lmi@state.vt.us

Data sources for this publication are: U.S. Census Bureau; Burlington Airport Administration; Vt. Departments of Labor, Finance & Management, Forests, Parks & Recreation, Taxes, Motor Vehicles, Vermont Information Center Division, Buildings & General Services, Vt. Agency of Transportation; Secretary of State's Office; Vt. Division for Historic Preservation; selected banks and travel attractions.

Equal opportunity is the law. The State of Vermont is an Equal Opportunity / Affirmative Action Employer. Applications from women, individuals with disabilities, and people from diverse cultural backgrounds are encouraged. Auxiliary aids and services are available upon request to individuals with disabilities. 711 (TTY/Relay Service) or (802) 828-4203 TDD (Vermont Department of Labor).