

VERMONT ECONOMIC AND TRAVEL INDICATORS

NOVEMBER 2013

visit our web site at: www.vtLmi.info

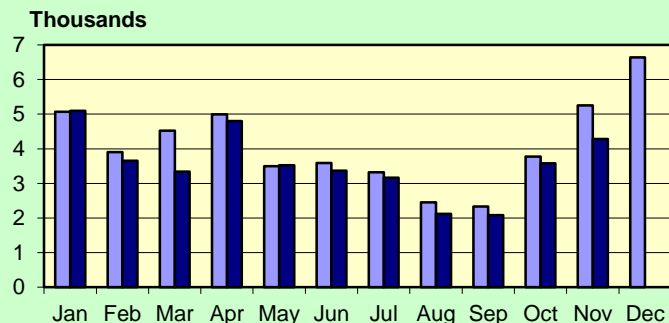
Labor Market & Business Activity	Current	Last	Year	% Change	
	Month	Month	Ago	Last Month	Last Year
Employment (NonFarm,S.A.,Thousand) *	309.2	307.0	305.5	0.7%	1.2%
Avg. Weekly Hours (Manufacturing) *	38.3	38.4	37.0	-0.3%	3.5%
Unemployment Rate (S. A. %)	4.4	4.5	5.0	-2.2%	-12.0%
U.I. Initial Claims	4,280	3,575	5,255	19.7%	-18.6%
U.I. Exhaustees	329	321	434	2.5%	-24.2%
Passenger Car Registrations	24,643	30,654	25,809	-19.6%	-4.5%
Total Current Car Registrations	420,936	420,580	415,277	0.1%	1.4%
Total Current Pick-Up Truck Reg.	106,703	106,735	107,648	0.0%	-0.9%
Bank Deposits - Survey (\$Million)	6,687	6,617	6,666	1.1%	0.3%
New Business Incorporations **	34	36	20	-5.6%	70.0%
Airport Enplanements (B.I.A.)	46,967	58,359	47,126	-19.5%	-0.3%

* Current Month numbers are preliminary, Last Month & Year Ago are revised. ** Includes "closed" corporations.

State Tax Revenues (\$Million)	Current Month	Fiscal Year To Date	FYTD Last Year	% Change	
				Last Year	Last FYTD
General Fund	80.0	505.4	487.7	-3.1%	3.6%
Personal Income	38.8	255.4	237.5	-0.8%	7.5%
Sales & Use	17.8	97.1	97.8	-2.3%	-0.7%
Corporate Income	-2.1	20.7	26.9	NA	-23.1%
Rooms & Meals	11.8	64.5	61.1	3.9%	5.5%
Property Transfer	0.9	5.0	4.1	33.3%	21.5%
Other *	4.2	35.8	33.8	-2.8%	5.9%
Transportation Fund	19.3	104.7	93.3	12.9%	12.3%
Gasoline	7.2	34.3	26.0	39.6%	32.0%
Purchase and Use	4.6	25.5	22.8	12.3%	11.7%
Motor Vehicle Fees	4.9	31.1	30.9	-9.8%	0.6%
Other	1.2	7.3	7.5	-10.2%	-2.8%
Education Fund, non-property tax component	13.0	72.7	68.2	2.0%	6.6%

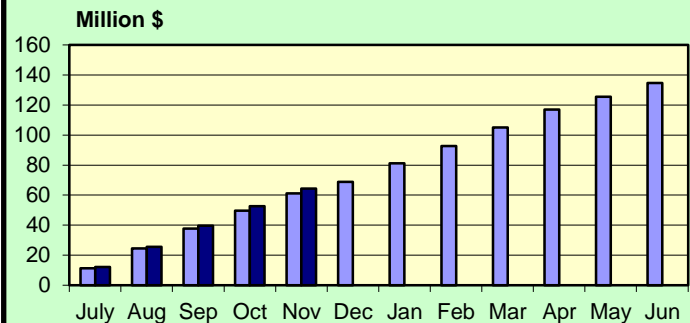
* Includes: Insurance, Inheritance & Estate, Bank Franchise, Telephone, Liquor, Beverage, Fees and Other Taxes.

**UI Initial Claims
2012-2013**



Source: Vt. Department of Labor

**Rooms & Meals Tax Revenues to Date
FY2012-FY2013**



Source: Vt. Dept. of Finance & Management

NOVEMBER 2013

Construction

Residential Building Permits	Current	Year	Year	Year To Date	
	Month	To Date	Ago	Last Year	% Change
Housing Units	92	1,318	71	1,213	8.7%
Estimated Value (\$thousand)	14,956	225,889	12,405	209,476	7.8%

Employment	Current	Last	Year	% Change	
	Month	Month	Ago	Last Month	Last Year
Construction Emp. (S.A.,thousand)	14.5	14.5	14.0	0.0%	3.6%

Travel & Tourism	Current	Last	Year	% Change	
	Month	Month	Ago	Last Month	Last Year
Leisure & Hospitality Emp. (S.A.,thousand)	35.6	33.8	34.2	5.3%	4.1%
Selected Traffic Volume *	66,997	76,524	67,226	-12.4%	-0.3%

>Welcome Center Counts, Total	56,802	90,386	55,209	-37.2%	2.9%
Guilford	40,640	64,875	39,868	-37.4%	1.9%
Fair Haven	9,384	15,932	9,292	-41.1%	1.0%
Georgia (Southbound)	6,778	9,579	6,049	-29.2%	12.1%

* Missing 1 location starting Aug. 2013.

Seasonal Indicators	Current	Season	Year	Season To Date	
	Month	To Date	Ago	Year Ago	% Change

Attendance Surveys

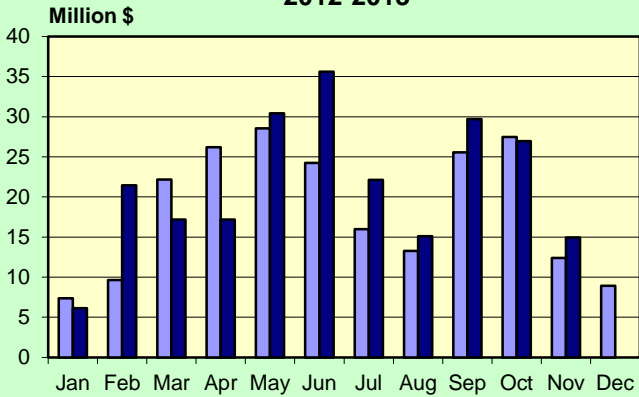
State Parks (Day Use)	NA	NA	NA	NA	NA
State Campgrounds (Campers)	NA	NA	NA	NA	NA
Travel Attr. & Museums (Summer) *	NA	NA	NA	NA	NA
Travel Attr. & Museums (Year Round) **	25,935	548,334	26,990	529,024	3.7%

* Based on VDOL survey of 8 Attractions operating during months of May - Oct. ** Based on VDOL survey of 7 attractions.

Travel Attraction data is collected as part of a managed sample; above information may not be directly comparable to previous releases..

NOVEMBER 2013

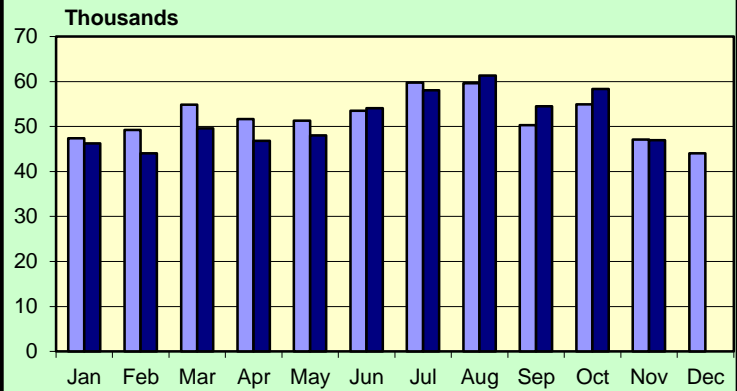
**Vermont Residential Building Permits
Estimated Value (\$Million)
2012-2013**



Source: U.S. Census Bureau

■ 2012 ■ 2013

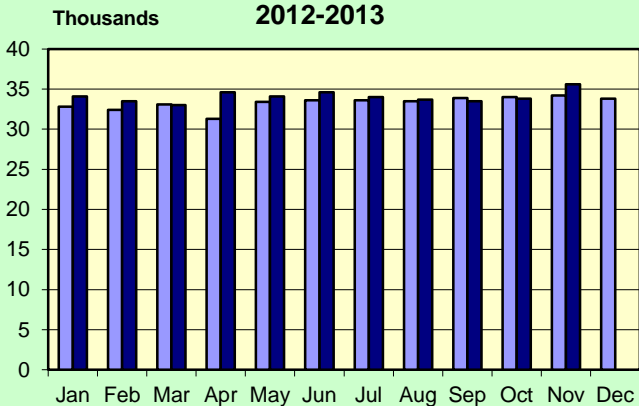
**Enplanements 2012-2013
Burlington International Airport**



Source: BIA Administration

■ 2012 ■ 2013

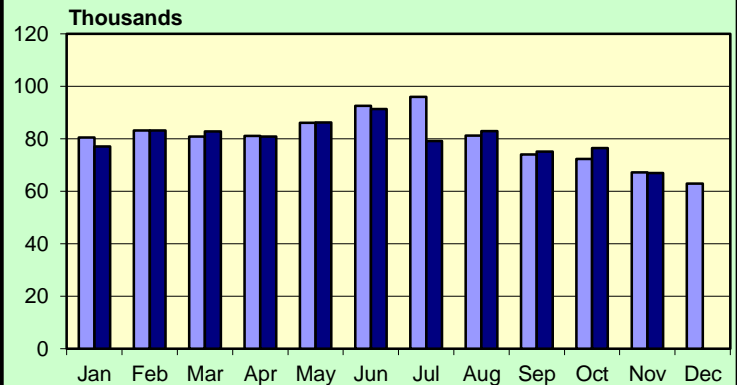
**Leisure & Hospitality Employment
Seasonally Adjusted Estimates
2012-2013**



Source: Vt. Department of Labor, LMI Section.

■ 2012 ■ 2013

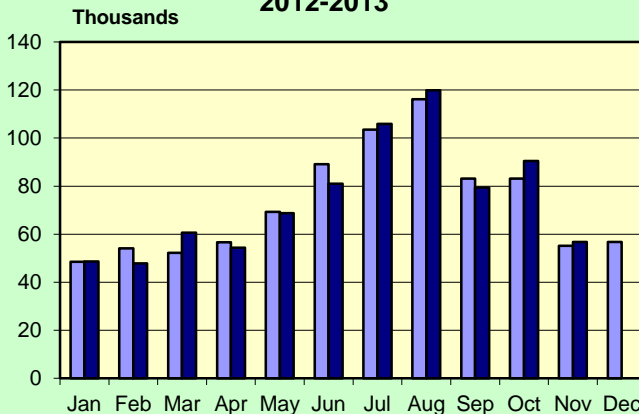
**Traffic Volumes at Selected Locations
2012-2013**



Source: Vt. Agency of Transportation
See note in table.

■ 2012 ■ 2013

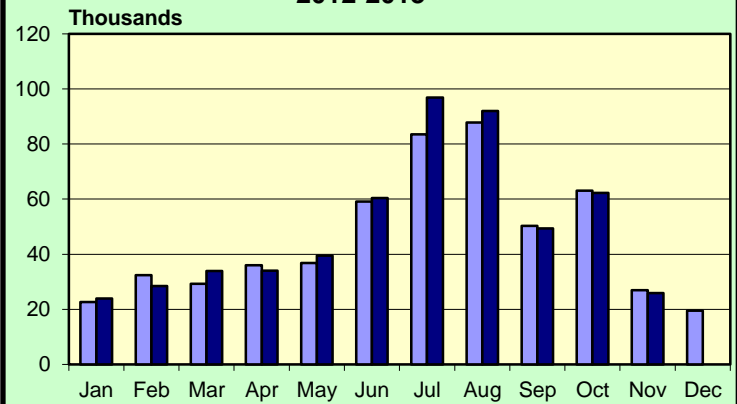
**Welcome Center Counts
2012-2013**



Source: Vermont Information Center Division, BGS.

■ 2012 ■ 2013

**Travel Attraction Attendance (Yr Rd)
2012-2013**



Based on VDOL survey of 7 Attractions.

■ 2012 ■ 2013

NOVEMBER 2013

Rooms & Meals Business Receipts **	CY 2nd Qtr	CY 1st Qtr	CY 2nd Qtr	% Change	
	(Apr-Jun)	(Jan-Mar)	(Apr-Jun)	Last Quarter	Last Year
	2013 *	2013	2012		
Room (\$Thousand)	70,672	126,120	67,570	-44.0%	4.6%
Meals (\$Thousand)	211,928	221,605	203,642	-4.4%	4.1%
Alcohol (\$Thousand)	36,343	46,429	33,257	-21.7%	9.3%

* Numbers are preliminary.

** All Business Receipts are for the Calendar Year (CY).

Vermont DEPARTMENT OF LABOR
ECONOMIC AND TRAVEL INDICATORS

Vermont Economic and Travel Indicators is published by the Economic & Labor Market Information Section of the VT Department of Labor. This publication can be found on our website: www.vtLmi.info

For more information or email address changes: Phone: (802)828-4202
or email: Labor-Lmi@state.vt.us

Data sources for this publication are: U.S. Census Bureau; Burlington Airport Administration; Vt. Departments of Labor, Finance & Management, Forests, Parks & Recreation, Taxes, Motor Vehicles, Vermont Information Center Division, Buildings & General Services, Vt. Agency of Transportation; Secretary of State's Office; Vt. Division for Historic Preservation; selected banks and travel attractions.

Equal opportunity is the law. The State of Vermont is an Equal Opportunity / Affirmative Action Employer. Applications from women, individuals with disabilities, and people from diverse cultural backgrounds are encouraged. Auxiliary aids and services are available upon request to individuals with disabilities. 711 (TTY/Relay Service) or (802) 828-4203 TDD (Vermont Department of Labor).