

VERMONT ECONOMIC AND TRAVEL INDICATORS

SEPTEMBER 2011

visit our web site at: www.vtLmi.info

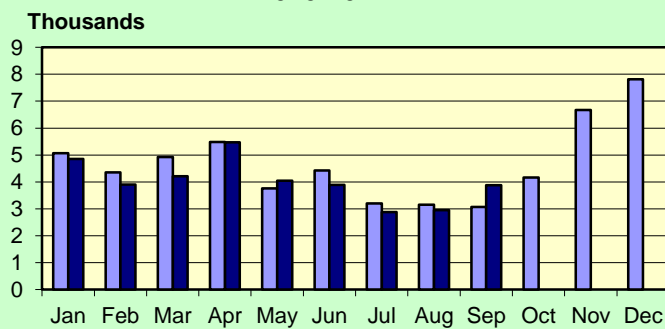
Labor Market & Business Activity	Current	Last	Year	% Change	
	Month	Month	Ago	Last Month	Last Year
Employment (NonFarm,S.A.,Thousand) *	303.3	302.6	297.1	0.2%	2.1%
Avg. Weekly Hours (Manufacturing) *	39.3	39.0	39.3	0.8%	0.0%
Unemployment Rate (S. A. %)	5.8	5.9	5.9	-1.7%	-1.7%
U.I. Initial Claims	3,880	2,950	3,064	31.5%	26.6%
U.I. Exhaustees	404	539	810	-25.0%	-50.1%
DOL Jobs Filled (last 12 months)	632	643	669	-1.7%	-5.5%
Passenger Car Registrations	32,202	35,889	32,098	-10.3%	0.3%
Total Current Car Registrations	414,347	414,068	411,705	0.1%	0.6%
Total Current Pick-Up Truck Reg.	110,669	110,499	111,779	0.2%	-1.0%
Bank Deposits - Survey (\$Million)	6,069	5,941	5,888	2.2%	3.1%
New Business Incorporations **	41	26	53	57.7%	-22.6%
Airport Enplanements (B.I.A.)	55,103	63,860	53,489	-13.7%	3.0%

* Numbers are preliminary. ** Includes "closed" corporations.

State Tax Revenues (\$Million)	Current	Fiscal Year	FYTD	% Change	
	Month	To Date	Last Year	Last Year	Last FYTD
General Fund	116.9	293.3	281.6	-0.7%	4.1%
Personal Income	58.0	146.0	133.7	4.0%	9.2%
Sales & Use	17.6	56.2	53.6	0.3%	5.0%
Corporate Income	18.3	22.2	23.0	-18.0%	-3.4%
Rooms & Meals	12.7	35.5	34.1	0.8%	4.1%
Property Transfer	0.8	2.3	7.7	16.2%	-69.9%
Other *	8.7	18.5	18.7	10.0%	-0.6%
Transportation Fund	19.2	54.6	54.8	-0.7%	-0.3%
Gasoline	5.7	16.3	16.1	8.2%	1.4%
Purchase and Use	4.8	13.2	12.6	-3.8%	4.4%
Motor Vehicle Fees	6.3	17.9	18.1	3.8%	-1.4%
Other	1.5	4.0	4.4	-5.0%	-8.0%
Education Fund, non-property tax component	12.9	39.1	37.3	-0.7%	4.9%

* Includes: Insurance, Inheritance & Estate, Bank Franchise, Telephone, Liquor, Beverage, Fees and Other Taxes.

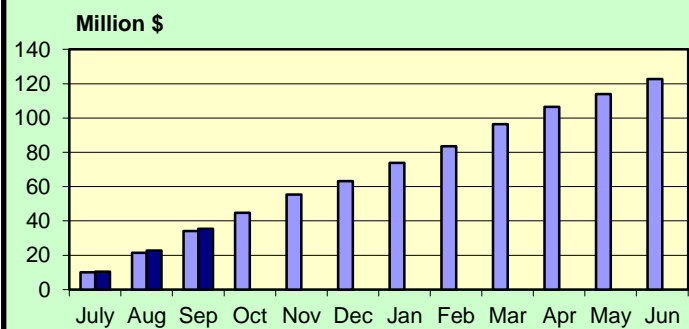
**UI Initial Claims
2010-2011**



Source: Vt. Department of Labor

■ 2010 ■ 2011

**Rooms & Meals Tax Revenues to Date
FY2011-FY2012**



Source: Vt. Dept. of Finance & Management

■ 2011 ■ 2012

SEPTMEBER 2011

Construction

Residential Building Permits	Current	Year	Year	Year To Date	
	Month	To Date	Ago	Last Year	% Change
Housing Units	160	913	168	1,221	-25.2%
Estimated Value (\$thousand)	18,752	147,212	24,677	197,590	-25.5%

Employment	Current	Last	Year	% Change	
	Month	Month	Ago	Last Month	Last Year
Construction Emp. (S.A.,thousand)	13.1	13.3	13.3	-1.5%	-1.5%

Travel & Tourism	Current	Last	Year	% Change	
	Month	Month	Ago	Last Month	Last Year
Leisure & Hospitality Emp. (S.A.,thousand)	34.3	34.0	32.0	0.9%	7.2%
Selected Traffic Volume *	73,323	78,738	75,125	-6.9%	-2.4%

Welcome Center Counts, Total	83,169	111,615	89,920	-25.5%	-7.5%
Guilford	58,199	76,747	60,669	-24.2%	-4.1%
Fair Haven	14,546	20,456	18,637	-28.9%	-22.0%
Georgia (Southbound)	10,424	14,412	10,614	-27.7%	-1.8%

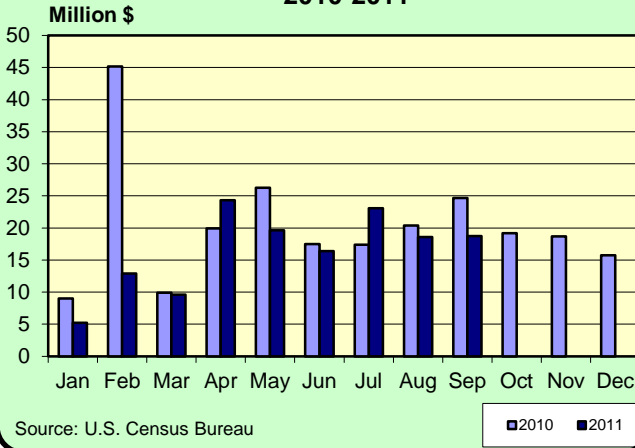
* Missing one location, 2010 data was removed for comparability.

Seasonal Indicators	Current	Season	Year	Season To Date	
	Month	To Date	Ago	Year Ago	% Change
Attendance Surveys					
State Parks (Day Use)	23,988	424,943	33,171	443,018	-4.1%
State Campgrounds (Campers)	34,346	352,201	42,068	368,099	-4.3%
Travel Attr. & Museums (Summer) *	46,738	325,647	49,954	281,974	15.5%
Travel Attr. & Museums (Year Round) **	62,832	507,462	75,398	533,978	-5.0%

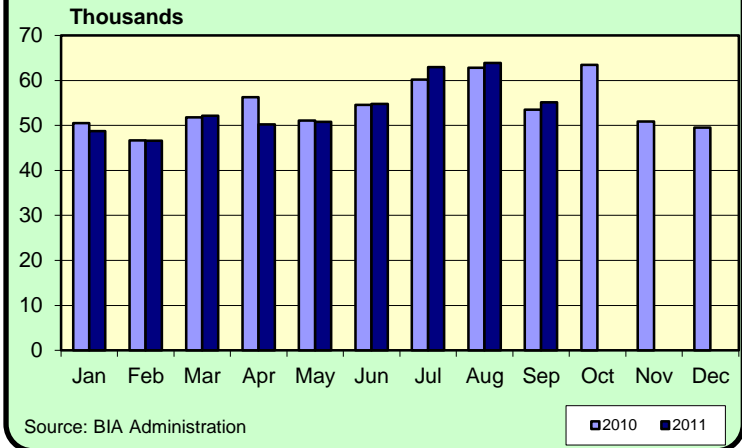
* Based on VDOL survey of 9 Attractions ** Based on VDOL survey of 8 attractions.

SEPTEMBER 2011

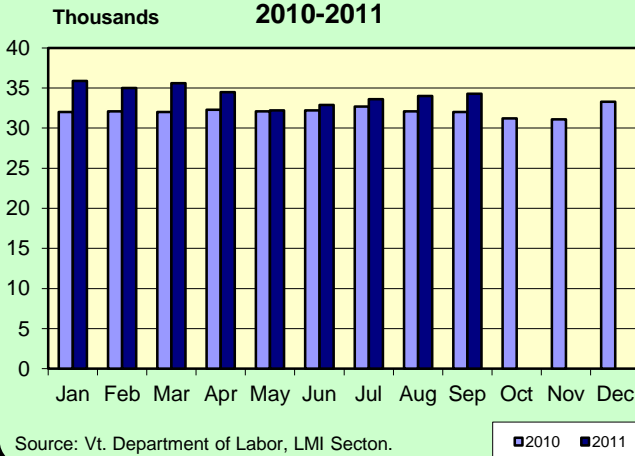
**Vermont Residential Building Permits
Estimated Value (\$Million)
2010-2011**



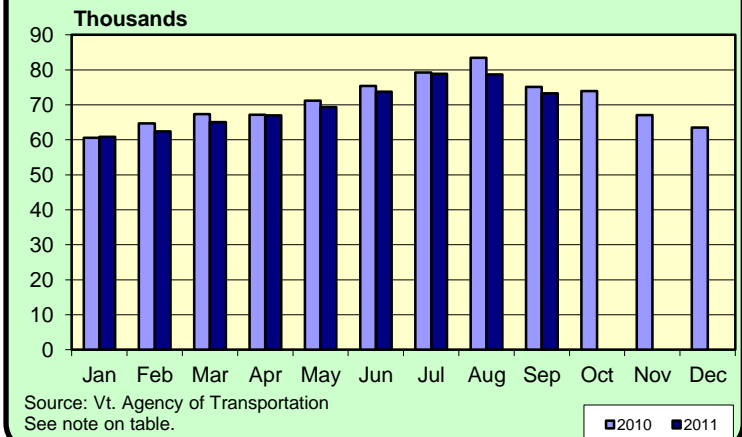
**Enplanements 2010-2011
Burlington International Airport**



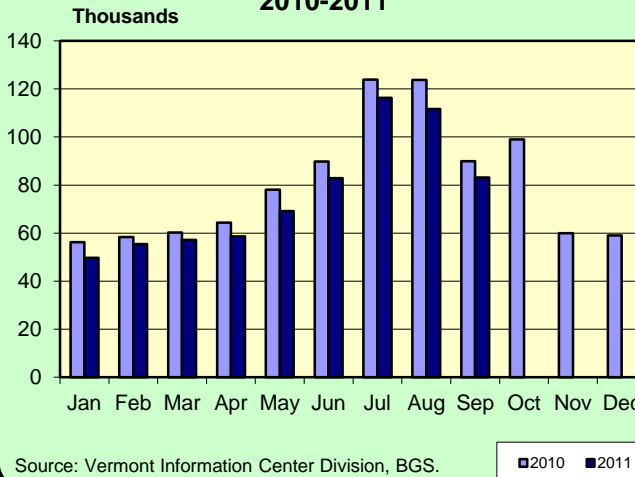
**Leisure & Hospitality Employment
Seasonally Adjusted Estimates
2010-2011**



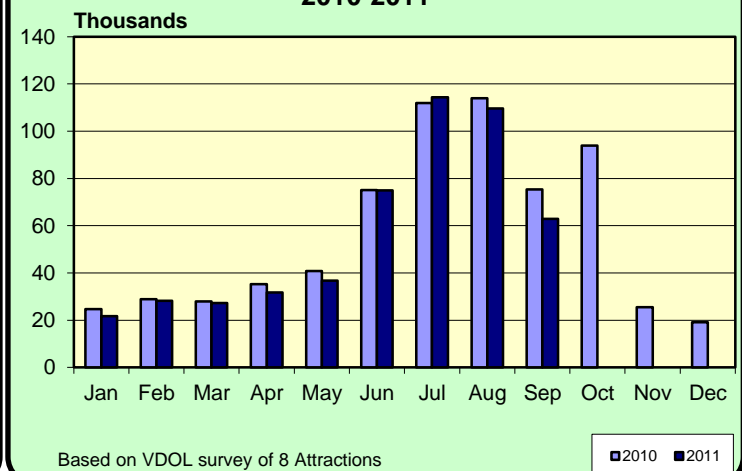
**Traffic Volumes at Selected Locations
2010-2011**



**Welcome Center Counts
2010-2011**



**Travel Attraction Attendance (Yr Rd)
2010-2011**



SEPTEMBER 2011

Rooms & Meals Business Receipts **	CY 2nd Qtr	CY 1st Qtr	CY 2nd Qtr	% Change	
	(Apr-Jun)	(Jan-Mar)	(Apr-Jun)	Last Quarter	Last Year
	2011 *	2011 *	2010		
Room (\$Thousand)	61,904	110,301	56,704	-43.9%	9.2%
Meals (\$Thousand)	192,805	199,891	187,429	-3.5%	2.9%
Alcohol (\$Thousand)	31,606	40,403	30,633	-21.8%	3.2%

* Numbers are preliminary.

** All Business Receipts are for the Calendar Year (CY).

Vermont DEPARTMENT OF LABOR
ECONOMIC AND TRAVEL INDICATORS

Vermont Economic and Travel Indicators is published by the Economic & Labor Market Information Section of the VT Department of Labor. This publication can be found on our website: www.vtLmi.info

For more information or email address changes: Phone: (802)828-4202
or email: Labor-Lmi@state.vt.us

Data sources for this publication are: U.S. Census Bureau; Burlington Airport Administration; Vt. Departments of Labor, Finance & Management, Forests, Parks & Recreation, Taxes, Motor Vehicles, Vermont Information Center Division, Buildings & General Services, Vt. Agency of Transportation; Secretary of State's Office; Vt. Division for Historic Preservation; selected banks and travel attractions.

Equal opportunity is the law. The State of Vermont is an Equal Opportunity / Affirmative Action Employer. Applications from women, individuals with disabilities, and people from diverse cultural backgrounds are encouraged. Auxiliary aids and services are available upon request to individuals with disabilities. 711 (TTY/Relay Service) or (802) 828-4203 TDD (Vermont Department of Labor).