

# VERMONT ECONOMIC AND TRAVEL INDICATORS

## DECEMBER 2011

visit our web site at: [www.vtLmi.info](http://www.vtLmi.info)

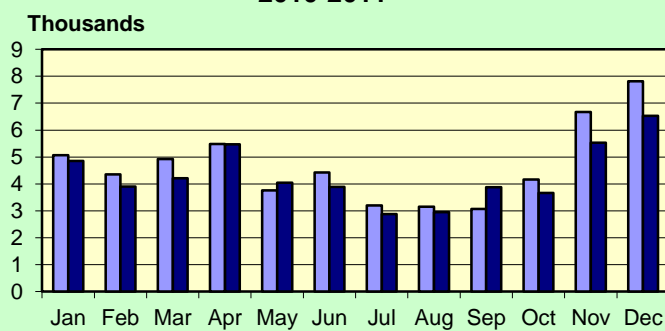
Labor Market & Business Activity	Current	Last	Year	% Change	
	Month	Month	Ago	Last Month	Last Year
Employment (NonFarm,S.A.,Thousand) *	303.0	303.7	298.6	-0.2%	1.5%
Avg. Weekly Hours (Manufacturing) *	38.4	39.0	39.4	-1.5%	-2.5%
Unemployment Rate (S. A. %)	5.1	5.3	5.8	-3.8%	-12.1%
U.I. Initial Claims	6,532	5,527	7,814	18.2%	-16.4%
U.I. Exhaustees	523	519	773	0.8%	-32.3%
DOL Jobs Filled (last 12 months)	619	NA	679	NA	-8.8%
Passenger Car Registrations	24,503	25,340	23,632	-3.3%	3.7%
Total Current Car Registrations	412,582	412,173	411,373	0.1%	0.3%
Total Current Pick-Up Truck Reg.	110,039	110,032	111,325	0.0%	-1.2%
Bank Deposits - Survey (\$Million)	6,152	6,040	5,990	1.9%	2.7%
New Business Incorporations **	59	32	46	84.4%	28.3%
Airport Enplanements (B.I.A.)	51,603	50,279	49,522	2.6%	4.2%

\* Numbers are preliminary. \*\* Includes "closed" corporations.

State Tax Revenues (\$Million)	Current	Fiscal Year	FYTD	% Change	
	Month	To Date	Last Year	Last Year	Last FYTD
<b>General Fund</b>	<b>96.5</b>	<b>569.1</b>	<b>551.7</b>	<b>-5.3%</b>	<b>3.2%</b>
Personal Income	52.0	283.9	267.5	-1.7%	6.1%
Sales & Use	18.4	113.4	107.2	8.1%	5.7%
Corporate Income	6.7	38.0	44.6	-63.6%	-14.9%
Rooms & Meals	7.8	65.4	63.2	-0.5%	3.5%
Property Transfer	0.6	4.2	4.1	-5.9%	1.5%
Other *	8.0	38.3	41.8	138.6%	-8.5%
<b>Transportation Fund</b>	<b>17.3</b>	<b>107.6</b>	<b>104.6</b>	<b>11.0%</b>	<b>2.8%</b>
Gasoline	5.0	31.1	31.6	4.2%	-1.5%
Purchase and Use	4.1	26.1	24.4	2.3%	7.1%
Motor Vehicle Fees	4.9	33.7	33.2	5.7%	1.4%
Other	2.0	8.9	8.0	85.0%	10.3%
<b>Education Fund, non-property tax component</b>	<b>12.7</b>	<b>79.2</b>	<b>75.0</b>	<b>6.6%</b>	<b>5.6%</b>

\* Includes: Insurance, Inheritance & Estate, Bank Franchise, Telephone, Liquor, Beverage, Fees and Other Taxes.

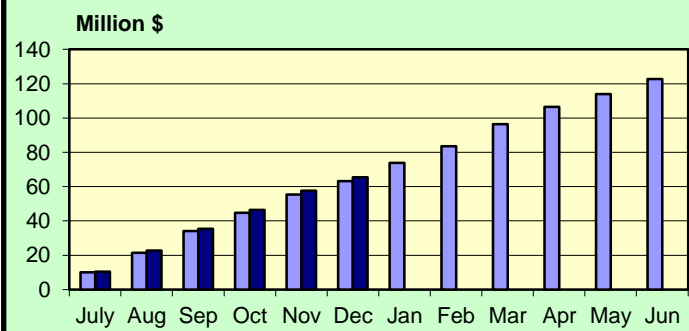
**UI Initial Claims  
2010-2011**



Source: Vt. Department of Labor

■ 2010 ■ 2011

**Rooms & Meals Tax Revenues to Date  
FY2011-FY2012**



Source: Vt. Dept. of Finance & Management

■ 2011 ■ 2012

## DECEMBER 2011

### Construction

Residential Building Permits	Current	Year	Year	Year To Date	
	Month	To Date	Ago	Last Year	% Change
Housing Units	142	1,199	98	1,530	-21.6%
Estimated Value (\$thousand)	17,933	191,790	15,743	247,751	-22.6%

Employment	Current	Last	Year	% Change	
	Month	Month	Ago	Last Month	Last Year
Construction Emp. (S.A.,thousand)	13.5	12.9	13.0	4.7%	3.8%

Travel & Tourism	Current	Last	Year	% Change	
	Month	Month	Ago	Last Month	Last Year
Leisure & Hospitality Emp. (S.A.,thousand)	33.7	34.4	33.3	-2.0%	1.2%
Selected Traffic Volume *	65,678	66,972	63,488	-1.9%	3.4%

Welcome Center Counts, Total	58,873	58,428	59,091	0.8%	-0.4%
Guilford	44,608	42,572	44,457	4.8%	0.3%
Fair Haven	8,488	9,369	9,256	-9.4%	-8.3%
Georgia (Southbound)	5,777	6,487	5,378	-10.9%	7.4%

\* Missing one location, 2010 data was removed for comparability.

Seasonal Indicators	Current	Season	Year	Season To Date	
	Month	To Date	Ago	Year Ago	% Change

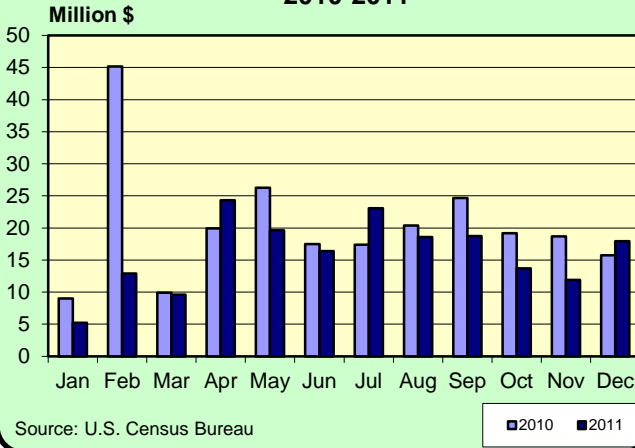
### Attendance Surveys

State Parks (Day Use)	NA	NA	NA	NA	NA
State Campgrounds (Campers)	NA	NA	NA	NA	NA
Travel Attr. & Museums (Summer) *	NA	NA	NA	NA	NA
Travel Attr. & Museums (Year Round) **	26,403	645,352	19,066	672,418	-4.0%

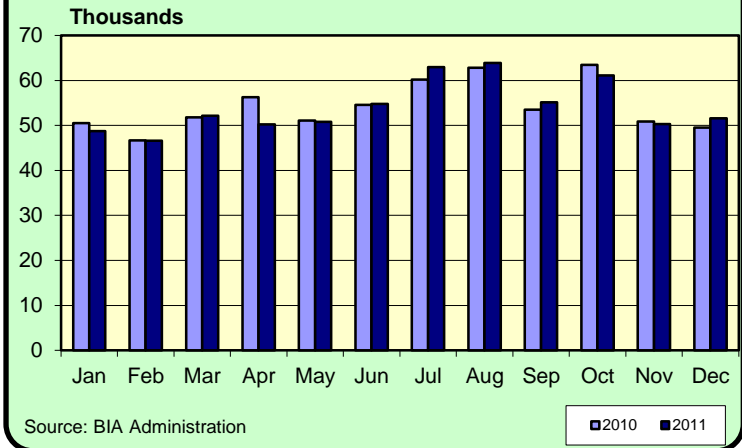
\* Based on VDOL survey of 9 Attractions \*\* Based on VDOL survey of 8 attractions.

## DECEMBER 2011

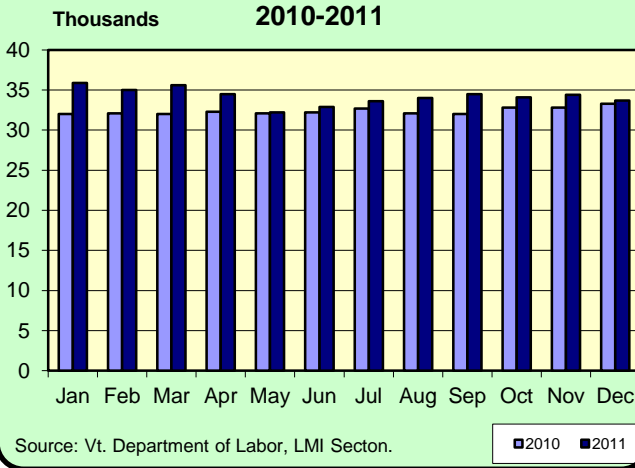
### Vermont Residential Building Permits Estimated Value (\$Million) 2010-2011



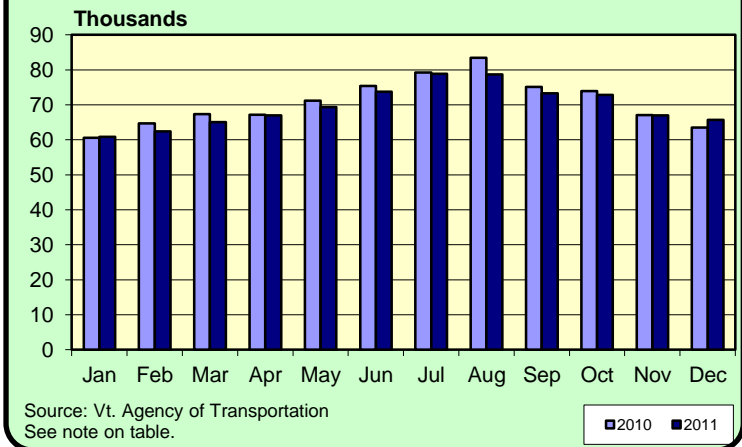
### Enplanements 2010-2011 Burlington International Airport



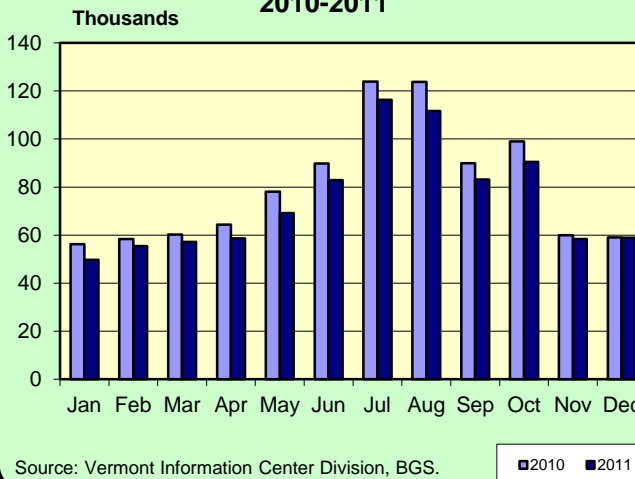
### Leisure & Hospitality Employment Seasonally Adjusted Estimates 2010-2011



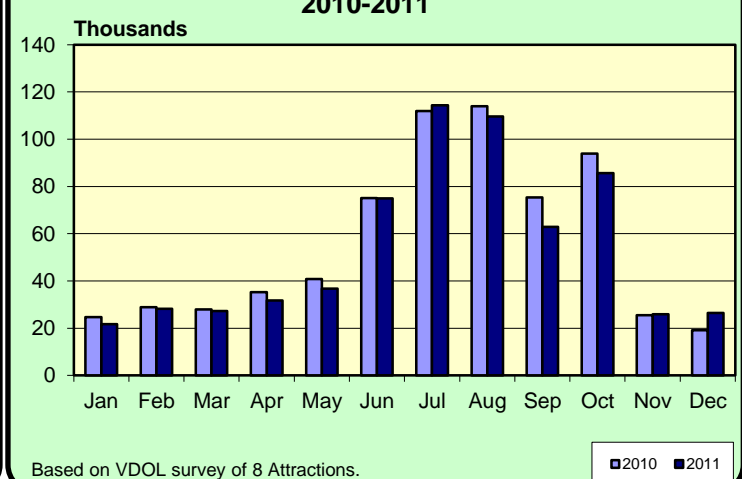
### Traffic Volumes at Selected Locations 2010-2011



### Welcome Center Counts 2010-2011



### Travel Attraction Attendance (Yr Rd) 2010-2011



**DECEMBER 2011**

Rooms & Meals Business Receipts **	CY 3rd Qtr	CY 2nd Qtr	CY 3rd Qtr	% Change	
	(Jul-Sep) 2011 *	(Apr-Jun) 2011	(Jul-Sep) 2010	Last Quarter	Last Year
Room (\$Thousand)	121,037	62,046	111,300	95.1%	8.7%
Meals (\$Thousand)	232,467	194,448	225,727	19.6%	3.0%
Alcohol (\$Thousand)	40,565	31,997	38,297	26.8%	5.9%

\* Numbers are preliminary.

\*\* All Business Receipts are for the Calendar Year (CY).

**Vermont DEPARTMENT OF LABOR**  
**ECONOMIC AND TRAVEL INDICATORS**

Vermont Economic and Travel Indicators is published by the Economic & Labor Market Information Section of the VT Department of Labor. This publication can be found on our website: [www.vtLmi.info](http://www.vtLmi.info)

For more information or email address changes: Phone: (802)828-4202  
or email: [Labor-Lmi@state.vt.us](mailto:Labor-Lmi@state.vt.us)

Data sources for this publication are: U.S. Census Bureau; Burlington Airport Administration; Vt. Departments of Labor, Finance & Management, Forests, Parks & Recreation, Taxes, Motor Vehicles, Vermont Information Center Division, Buildings & General Services, Vt. Agency of Transportation; Secretary of State's Office; Vt. Division for Historic Preservation; selected banks and travel attractions.

Equal opportunity is the law. The State of Vermont is an Equal Opportunity / Affirmative Action Employer. Applications from women, individuals with disabilities, and people from diverse cultural backgrounds are encouraged. Auxiliary aids and services are available upon request to individuals with disabilities. 711 (TTY/Relay Service) or (802) 828-4203 TDD (Vermont Department of Labor).