

VERMONT ECONOMIC AND TRAVEL INDICATORS

AUGUST 2011

visit our web site at: www.vtLmi.info

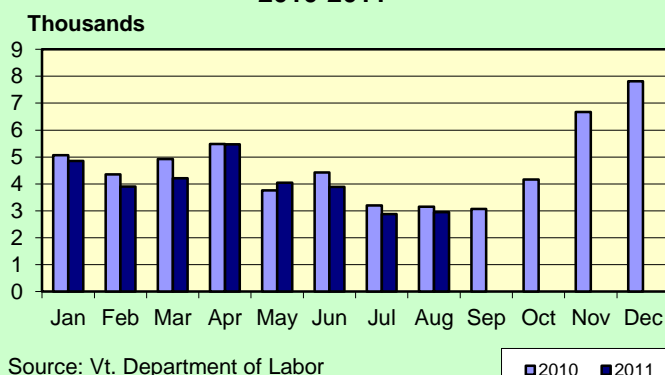
Labor Market & Business Activity	Current	Last	Year	% Change	
	Month	Month	Ago	Last Month	Last Year
Employment (NonFarm,S.A.,Thousand) *	302.9	301.5	297.1	0.5%	2.0%
Avg. Weekly Hours (Manufacturing) *	39.0	39.0	39.0	0.0%	0.0%
Unemployment Rate (S. A. %)	5.9	5.7	6.0	3.5%	-1.7%
U.I. Initial Claims	2,950	2,883	3,148	2.3%	-6.3%
U.I. Exhaustees	539	510	878	5.7%	-38.6%
DOL Jobs Filled (last 12 months)	643	634	628	1.4%	2.4%
Passenger Car Registrations	35,889	34,336	35,575	4.5%	0.9%
Total Current Car Registrations	414,068	391,487	412,814	5.8%	0.3%
Total Current Pick-Up Truck Reg.	110,499	109,764	112,298	0.7%	-1.6%
Bank Deposits - Survey (\$Million)	5,941	5,857	5,871	1.4%	1.2%
New Business Incorporations **	26	30	61	-13.3%	-57.4%
Airport Enplanements (B.I.A.)	63,860	62,931	62,839	1.5%	1.6%

* Numbers are preliminary. ** Includes "closed" corporations.

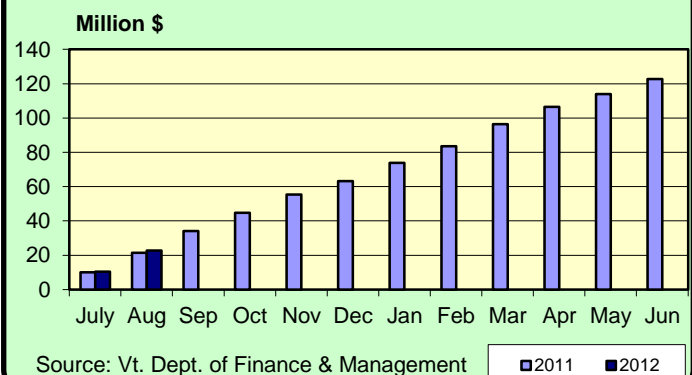
State Tax Revenues (\$Million)	Current	Fiscal Year	FYTD	% Change	
	Month	To Date	Last Year	Last Year	Last FYTD
General Fund	90.1	176.3	163.9	10.2%	7.6%
Personal Income	43.5	88.0	77.9	25.5%	12.9%
Sales & Use	17.3	38.7	36.0	7.3%	7.3%
Corporate Income	2.0	4.0	0.7	27.6%	436.5%
Rooms & Meals	12.4	22.8	21.5	8.8%	6.1%
Property Transfer	0.8	1.5	1.4	21.0%	12.5%
Other *	3.4	9.9	16.5	-60.9%	-40.1%
Transportation Fund	20.1	35.4	35.6	2.6%	-0.5%
Gasoline	5.5	10.6	10.9	-3.3%	-2.0%
Purchase and Use	5.0	8.3	7.7	20.3%	8.8%
Motor Vehicle Fees	6.6	11.6	12.2	0.6%	-4.4%
Other	1.2	2.5	2.8	-33.1%	-10.1%
Education Fund, non-property tax component	13.0	26.3	24.3	9.9%	7.9%

* Includes: Insurance, Inheritance & Estate, Bank Franchise, Telephone, Liquor, Beverage, Fees and Other Taxes.

**UI Initial Claims
2010-2011**



**Rooms & Meals Tax Revenues to Date
FY2011-FY2012**



AUGUST 2011

Construction

Residential Building Permits	Current	Year	Year	Year To Date	
	Month	To Date	Ago	Last Year	% Change
Housing Units	85	781	70	1,056	-26.0%
Estimated Value (\$thousand)	18,601	132,687	20,383	172,085	-22.9%

Employment	Current	Last	Year	% Change	
	Month	Month	Ago	Last Month	Last Year
Construction Emp. (S.A.,thousand)	13.1	13.3	13.2	-1.5%	-0.8%

Travel & Tourism	Current	Last	Year	% Change	
	Month	Month	Ago	Last Month	Last Year
Leisure & Hospitality Emp. (S.A.,thousand)	33.5	33.6	32.1	-0.3%	4.4%
Selected Traffic Volume *	78,738	78,920	83,501	-0.2%	-5.7%

>Welcome Center Counts, Total	111,615	116,335	123,683	-4.1%	-9.8%
Guilford	76,747	82,271	84,949	-6.7%	-9.7%
Fair Haven	20,456	20,897	23,428	-2.1%	-12.7%
Georgia (Southbound)	14,412	13,167	15,306	9.5%	-5.8%

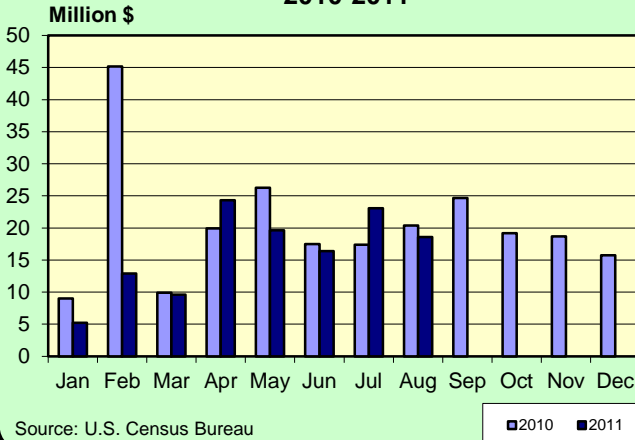
* Missing one location, 2010 data was removed for comparability.

Seasonal Indicators	Current	Season	Year	Season To Date	
	Month	To Date	Ago	Year Ago	% Change
Attendance Surveys					
State Parks (Day Use)	116,407	400,955	127,452	409,847	-2.2%
State Campgrounds (Campers)	112,536	317,855	118,471	326,031	-2.5%
Travel Attr. & Museums (Summer) *	120,881	278,909	95,626	232,020	20.2%
Travel Attr. & Museums (Year Round) **	109,582	444,630	114,002	458,580	-3.0%

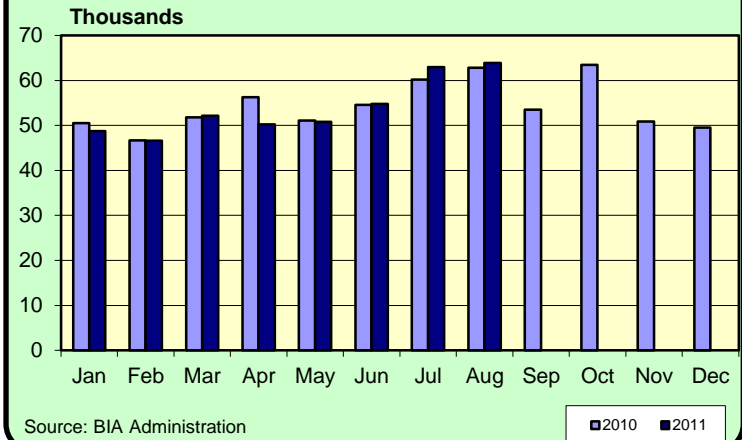
* Based on VDOL survey of 9 Attractions ** Based on VDOL survey of 8 attractions.

AUGUST 2011

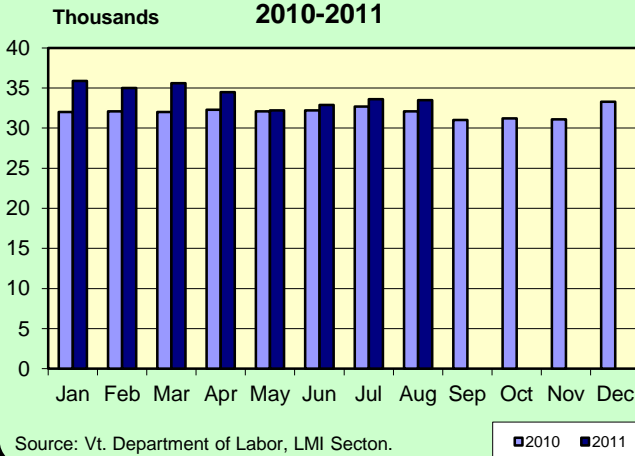
**Vermont Residential Building Permits
Estimated Value (\$Million)
2010-2011**



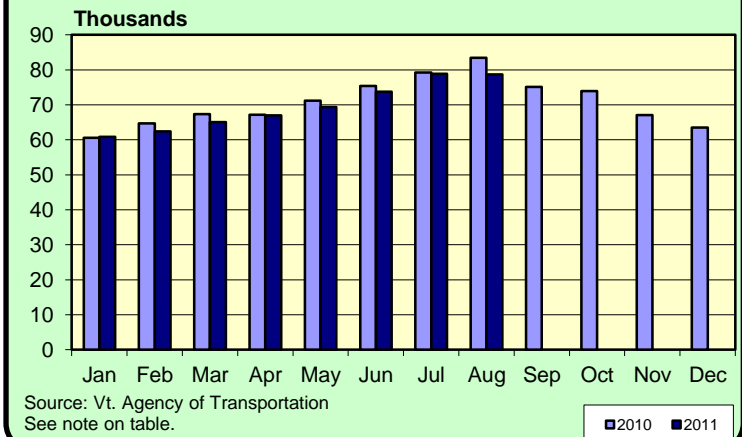
**Enplanements 2010-2011
Burlington International Airport**



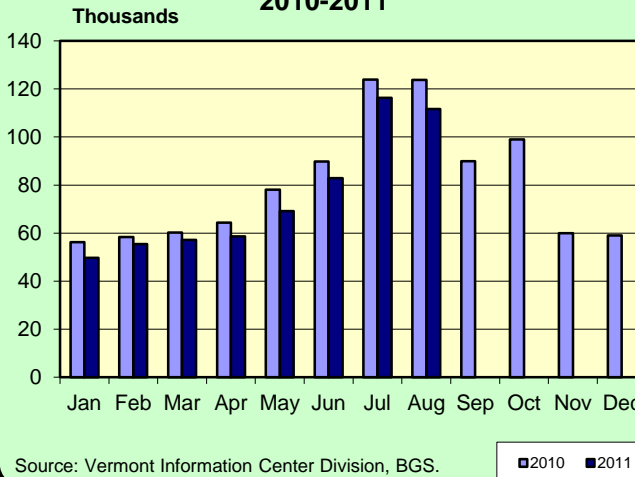
**Leisure & Hospitality Employment
Seasonally Adjusted Estimates
2010-2011**



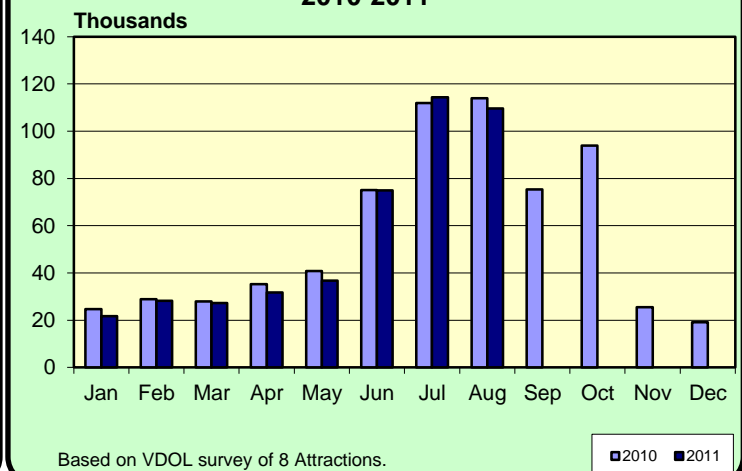
**Traffic Volumes at Selected Locations
2010-2011**



**Welcome Center Counts
2010-2011**



**Travel Attraction Attendance (Yr Rd)
2010-2011**



AUGUST 2011

Rooms & Meals Business Receipts **	CY 1st Qtr	CY 4th Qtr	CY 1st Qtr	% Change	
	(Jan-Mar) 2011 *	(Oct-Dec) 2010	(Jan-Mar) 2010	Last Quarter	Last Year
Room (\$Thousand)	110,301	86,686	98,769	27.2%	11.7%
Meals (\$Thousand)	199,891	196,242	195,709	1.9%	2.1%
Alcohol (\$Thousand)	40,403	34,790	39,179	16.1%	3.1%

* Numbers are preliminary.

** All Business Receipts are for the Calendar Year (CY).

Vermont DEPARTMENT OF LABOR
ECONOMIC AND TRAVEL INDICATORS

Vermont Economic and Travel Indicators is published by the Economic & Labor Market Information Section of the VT Department of Labor. This publication can be found on our website: www.vtLmi.info

For more information or email address changes: Phone: (802)828-4202
or email: Labor-Lmi@state.vt.us

Data sources for this publication are: U.S. Census Bureau; Burlington Airport Administration; Vt. Departments of Labor, Finance & Management, Forests, Parks & Recreation, Taxes, Motor Vehicles, Vermont Information Center Division, Buildings & General Services, Vt. Agency of Transportation; Secretary of State's Office; Vt. Division for Historic Preservation; selected banks and travel attractions.

Equal opportunity is the law. The State of Vermont is an Equal Opportunity / Affirmative Action Employer. Applications from women, individuals with disabilities, and people from diverse cultural backgrounds are encouraged. Auxiliary aids and services are available upon request to individuals with disabilities. 711 (TTY/Relay Service) or (802) 828-4203 TDD (Vermont Department of Labor).